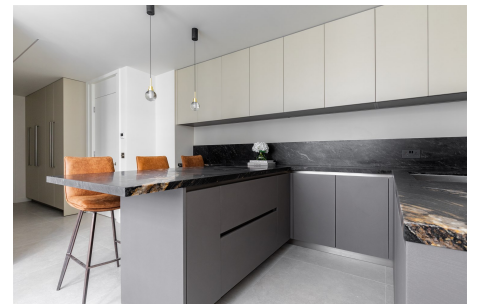




**MOUNTGRANGE**  
HERITAGE



## Lowndes Square, SW1X

**£3,500 per week** Fees May Apply

A beautiful four-bedroom apartment to rent on Lowndes Square, Knightsbridge, one of central London's most exclusive garden squares.

**4 Bedrooms | 1 Reception Room | 4 Bathrooms**  
**Unfurnished**

### Kensington Office

13b Stratford Road, London W8 6RF

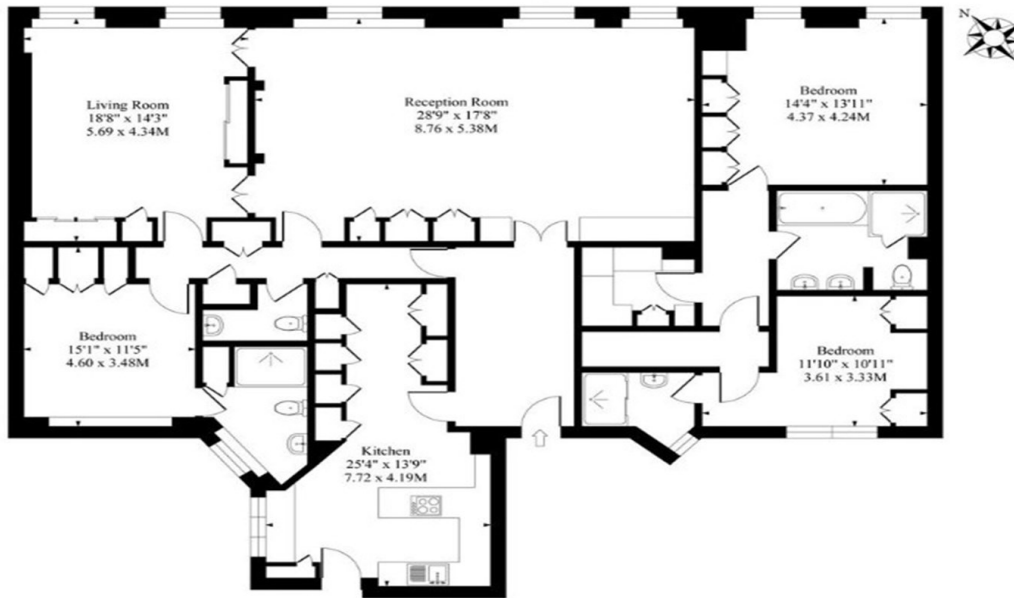
020 7937 9976

[lettings.ken@mountgrangeheritage.co.uk](mailto:lettings.ken@mountgrangeheritage.co.uk)

**Other offices** North Kensington - Notting Hill

[mountgrangeheritage.co.uk](http://mountgrangeheritage.co.uk)

Lowndes Square, SW1X



Floor Plan

Approximate Gross Internal Area 2167 Sq Ft - 201.3 Sq M  
Measured in according with RICS guidelines. Every attempt is made to ensure accuracy  
However all measurements are approximate.  
The floor plan is illustrative purposes only and is not to scale

**IMPORTANT NOTICE**

Mountgrange Heritage and their clients give notice that: 1) They are not authorised to make or give any representations or warranties in relation to the property either here or elsewhere, either on their own behalf or on behalf of their client or otherwise. They assume no responsibility for any statement that may be made in these particulars. These particulars do not form part of any offer or contract and must not be relied upon as statements or representations of fact. 2) Any areas, measurements or distances are approximate. The text, photographs and plans are for guidance only and are not necessarily comprehensive. It should not be assumed that the property has all necessary planning, building regulation or other consents and Mountgrange Heritage have not tested any services, equipment or facilities. Purchasers must satisfy themselves by inspection or otherwise.