



MOUNTGRANGE
HERITAGE



Lombardy Place, W2

£1,292 per week Fees May Apply

Positioned within the exclusive Lombardy Place, W2, this outstanding four-bedroom home offers approximately 1,518 sq ft of thoughtfully designed living space, perfectly suited to contemporary family living.

4 Bedrooms | 1 Reception Room | 3 Bathrooms
Unfurnished

Notting Hill Office

27 Kensington Park Road, London W11 2EU

020 7221 2277

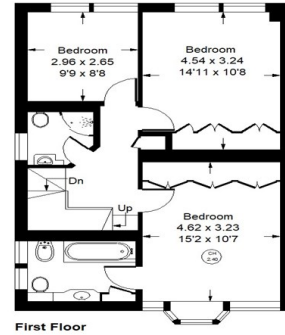
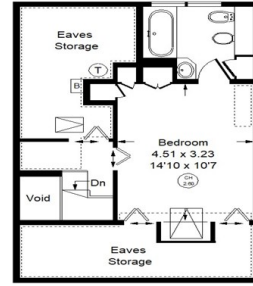
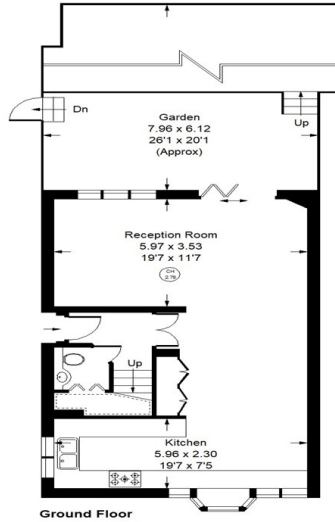
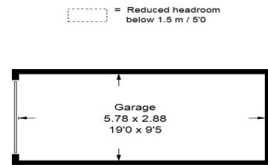
lettings.nhg@mountgrangeheritage.co.uk

Other offices Kensington - North Kensington

mountgrangeheritage.co.uk

Lombardy Place, W2

Approx. Gross Internal Area = 141.0 sq m / 1518 sq ft
 Eaves Storage = 19.6 sq m / 211 sq ft
 Garage = 16.5 sq m / 178 sq ft
 Total = 177.1 sq m / 1907 sq ft
 (Excluding Void)



Whilst every attempt has been made to ensure the accuracy of the floor plan, measurements are approximate and not to scale. No guarantee is given on the total square footage of the property quoted on the plan. Figures given are for guidance. Plan is for illustration purposes only, not to be used for valuations.

IMPORTANT NOTICE

Mountgrange Heritage and their clients give notice that: 1) They are not authorised to make or give any representations or warranties in relation to the property either here or elsewhere, either on their own behalf or on behalf of their client or otherwise. They assume no responsibility for any statement that may be made in these particulars. These particulars do not form part of any offer or contract and must not be relied upon as statements or representations of fact. 2) Any areas, measurements or distances are approximate. The text, photographs and plans are for guidance only and are not necessarily comprehensive. It should not be assumed that the property has all necessary planning, building regulation or other consents and Mountgrange Heritage have not tested any services, equipment or facilities. Purchasers must satisfy themselves by inspection or otherwise.