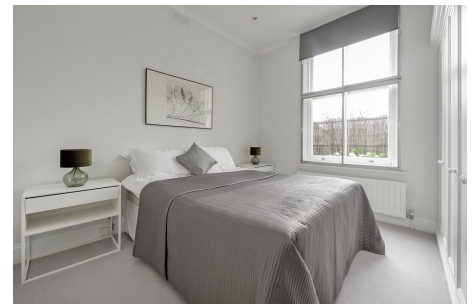




MOUNTGRANGE
HERITAGE



Lexham Gardens, W8

£905 per week Fees May Apply

Situated in the prestigious Kensington and Chelsea area, W8, this elegant two-bedroom, two-bathroom conversion flat offers a perfect blend of period charm and modern comfort. Located on the second floor of a period building (without lift), the property boasts spacious and naturally bright living spaces, enhanced by original period features throughout.

2 Bedrooms | 0 Reception Rooms | 1 Bathroom
Furnished/Unfurnished

Kensington Office

13b Stratford Road, London W8 6RF
020 7937 9976

lettings.ken@mountgrangeheritage.co.uk

Other offices North Kensington - Notting Hill

mountgrangeheritage.co.uk

Imperial Court, Lexham Gardens, W8

Gross internal area (approx.)
80 Sq m (863 Sq ft) Including Under 1.5m
79 Sq m (852 Sq ft) Excluding Under 1.5m
For identification only. Not to Scale



Second Floor

For guidance only and must not be relied upon as a statement of fact or used for valuation purposes.
All measurements and areas are approximate only (and have been prepared in accordance with the current edition of the RICS Code of Measuring Practice).



IMPORTANT NOTICE

Mountgrange Heritage and their clients give notice that: 1) They are not authorised to make or give any representations or warranties in relation to the property either here or elsewhere, either on their own behalf or on behalf of their client or otherwise. They assume no responsibility for any statement that may be made in these particulars. These particulars do not form part of any offer or contract and must not be relied upon as statements or representations of fact. 2) Any areas, measurements or distances are approximate. The text, photographs and plans are for guidance only and are not necessarily comprehensive. It should not be assumed that the property has all necessary planning, building regulation or other consents and Mountgrange Heritage have not tested any services, equipment or facilities. Purchasers must satisfy themselves by inspection or otherwise.