

**MOUNTGRANGE**  
HERITAGE



## Celbridge Mews, W2

**£650 per week** Fees May Apply

A fabulous mews house set within a former dairy converted into residential homes in 1980s. This beautifully presented property offers generous living space flooded with natural light, featuring high ceilings, wooden flooring throughout, and excellent built-in storage including an outside storage cupboard.

**1 Bedroom | 1 Reception Room | 1 Bathroom**  
**Furnished**

### Notting Hill Office

27 Kensington Park Road, London W11 2EU

020 7221 2277

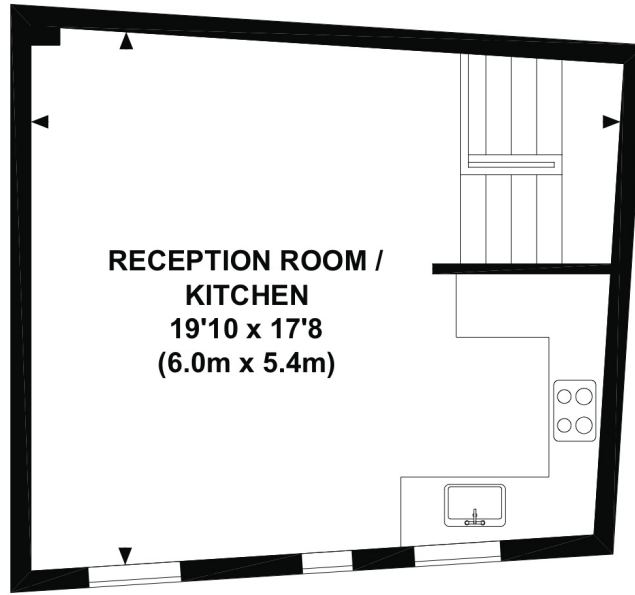
[lettings.nhg@mountgrangeheritage.co.uk](mailto:lettings.nhg@mountgrangeheritage.co.uk)

**Other offices** Kensington - North Kensington

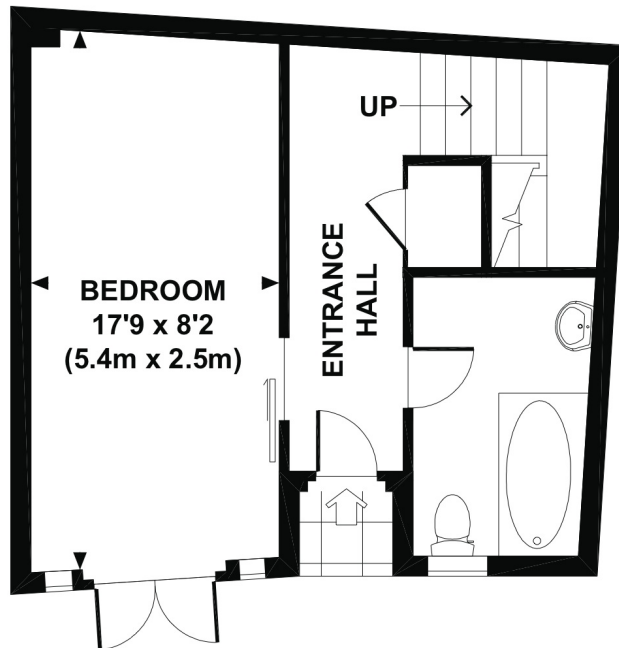
[mountgrangeheritage.co.uk](http://mountgrangeheritage.co.uk)

# CELBRIDGE MEWS, W2

Approx. gross internal area  
619 Sq.Ft. / 57.5 Sq.M.



FIRST FLOOR



GROUND FLOOR



All measurements are approximate and for illustration purposes only as defined by the RICS Code of Measuring Practice © 2012  
Dowling Jones Design www.dowlingjones.com 020 7610 9933

## IMPORTANT NOTICE

Mountgrange Heritage and their clients give notice that: 1) They are not authorised to make or give any representations or warranties in relation to the property either here or elsewhere, either on their own behalf or on behalf of their client or otherwise. They assume no responsibility for any statement that may be made in these particulars. These particulars do not form part of any offer or contract and must not be relied upon as statements or representations of fact. 2) Any areas, measurements or distances are approximate. The text, photographs and plans are for guidance only and are not necessarily comprehensive. It should not be assumed that the property has all necessary planning, building regulation or other consents and Mountgrange Heritage have not tested any services, equipment or facilities. Purchasers must satisfy themselves by inspection or otherwise.