



MOUNTGRANGE
HERITAGE



Radley Mews, W8

£2,308 per week Fees May Apply

A beautifully presented four bedroom house situated on the pretty cobbled street of Radley Mews in Kensington.

4 Bedrooms | 2 Reception Rooms | 3 Bathrooms
Furnished/Unfurnished

Kensington Office

13b Stratford Road, London W8 6RF

020 7937 9976

lettings.ken@mountgrangeheritage.co.uk

Other offices North Kensington - Notting Hill

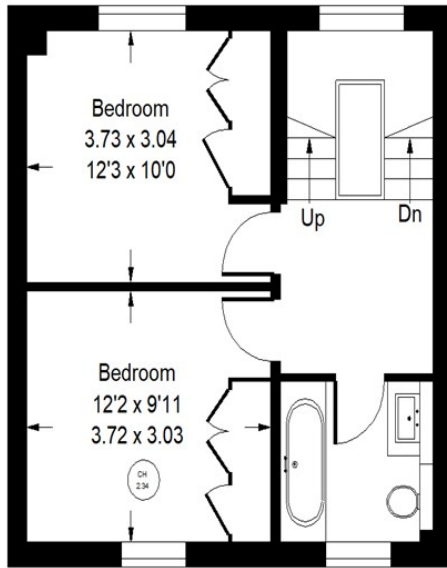
mountgrangeheritage.co.uk

Radley Mews, W8

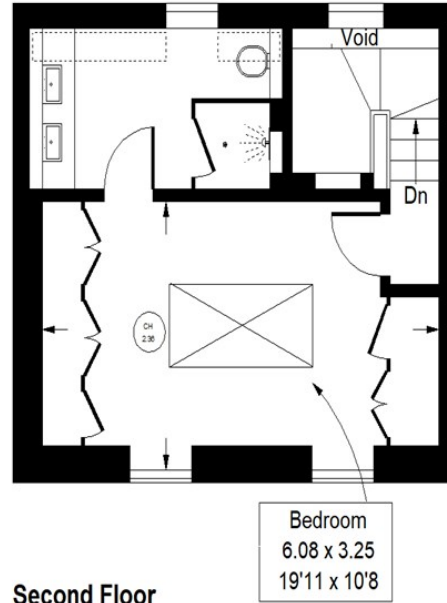


Approx. Gross Internal Area
146.1 sq m / 1573 sq ft
(Excluding Void)

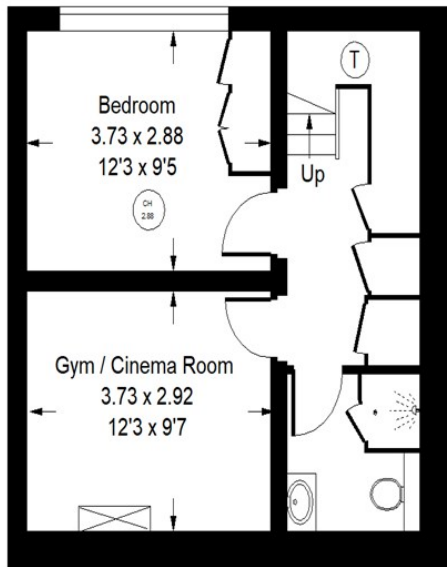
= Reduced headroom below 1.5 m / 5'0"



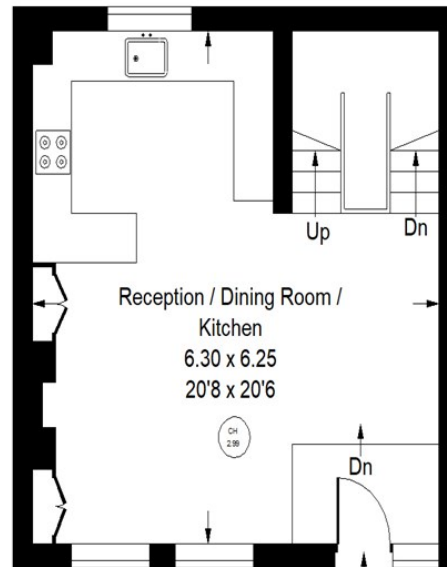
First Floor



Second Floor



Lower Ground Floor



Ground Floor

Whilst every attempt has been made to ensure the accuracy of the floor plan, measurements are approximate and not to scale.
No guarantee is given on the total square footage of the property quoted on the plan. Figures given are for guidance.
Plan is for illustration purposes only, not to be used for valuations.

IMPORTANT NOTICE

Mountgrange Heritage and their clients give notice that: 1) They are not authorised to make or give any representations or warranties in relation to the property either here or elsewhere, either on their own behalf or on behalf of their client or otherwise. They assume no responsibility for any statement that may be made in these particulars. These particulars do not form part of any offer or contract and must not be relied upon as statements or representations of fact. 2) Any areas, measurements or distances are approximate. The text, photographs and plans are for guidance only and are not necessarily comprehensive. It should not be assumed that the property has all necessary planning, building regulation or other consents and Mountgrange Heritage have not tested any services, equipment or facilities. Purchasers must satisfy themselves by inspection or otherwise.