



MOUNTGRANGE
HERITAGE



Thistle Grove, SW10

£2,400 per week Fees May Apply

This beautifully presented idyllic home with three double bedrooms is quietly situated in the heart of Chelsea.

3 Bedrooms | 1 Reception Room | 2 Bathrooms

Furnished

Kensington Office

13b Stratford Road, London W8 6RF

020 7937 9976

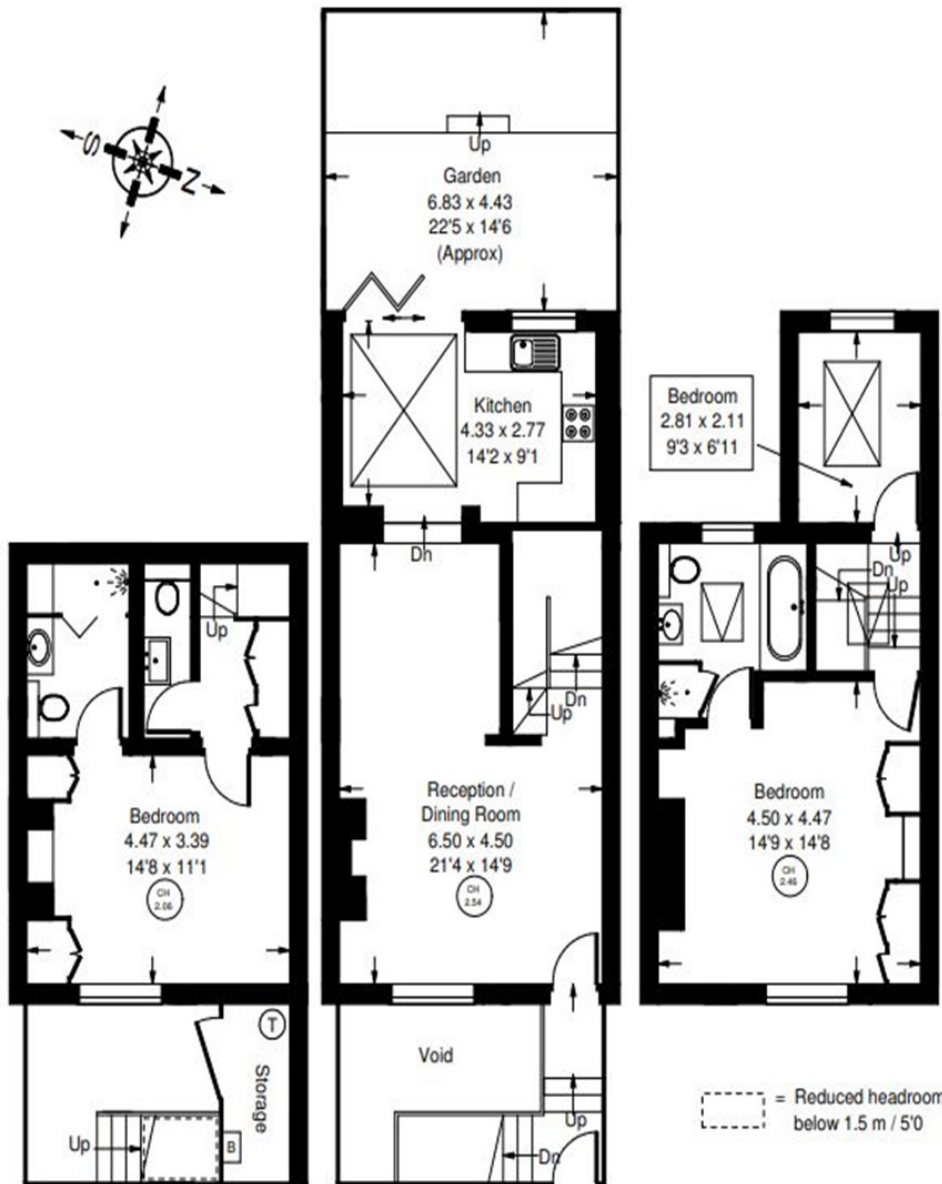
lettings.ken@mountgrangeheritage.co.uk

Other offices North Kensington - Notting Hill

mountgrangeheritage.co.uk

Thistle Grove, SW10

Approx. Gross Internal Area = 107.7 sq m / 1159 sq ft
 External Storage = 3 sq m / 32 sq ft
 Total = 110.7 sq m / 1191 sq ft



Lower Ground Floor

Ground Floor

First Floor

Whilst every attempt has been made to ensure the accuracy of the floor plan, measurements are approximate and not to scale.
 No guarantee is given on the total square footage of the property quoted on the plan. Figures given are for guidance.
 Plan is for illustration purposes only, not to be used for valuations.

Energy performance certificate (EPC)

Thistle Grove LONDON SW10 9RR	Energy rating D	Valid until: 15 October 2024 Certificate number: 9948-0984-6260-5544-8950
-------------------------------------	---------------------------	--

Property type Mid-terrace house

Total floor area 111 square metres

Rules on letting this property

Properties can be let if they have an energy rating from A to E.

You can read [guidance for landlords on the regulations and exemptions](https://www.gov.uk/guidance/domestic-private-rented-property-minimum-energy-efficiency-standard-landlord-guidance) (<https://www.gov.uk/guidance/domestic-private-rented-property-minimum-energy-efficiency-standard-landlord-guidance>).

Energy rating and score

This property's current energy rating is D. It has the potential to be B.

[See how to improve this property's energy efficiency.](#)

Score	Energy rating	Current	Potential
92+	A		
81-91	B		85 B
69-80	C		
55-68	D	63 D	
39-54	E		
21-38	F		
1-20	G		

The graph shows this property's current and potential energy rating.

Properties get a rating from A (best) to G (worst) and a score. The better the rating and score, the lower your energy bills are likely to be.

For properties in England and Wales:

the average energy rating is D
the average energy score is 60

IMPORTANT NOTICE

Mountgrange Heritage and their clients give notice that: 1) They are not authorised to make or give any representations or warranties in relation to the property either here or elsewhere, either on their own behalf or on behalf of their client or otherwise. They assume no responsibility for any statement that may be made in these particulars. These particulars do not form part of any offer or contract and must not be relied upon as statements or representations of fact. 2) Any areas, measurements or distances are approximate. The text, photographs and plans are for guidance only and are not necessarily comprehensive. It should not be assumed that the property has all necessary planning, building regulation or other consents and Mountgrange Heritage have not tested any services, equipment or facilities. Purchasers must satisfy themselves by inspection or otherwise.