

Highlever Road, W10

£2,850,000 Freehold

A beautiful period house that has been transformed by the current owners to create a stunning family home. This three bedroom house is arranged on the ground floor with the main reception room overlooking the front garden, a large kitchen family room, dining area, children's play area and reception space overlooking the stunning rear garden. The first floor is arranged with a principle bedroom including an en-suite bathroom and dressing room, a second double bedroom with en-suite and a private study. The converted loft has a further double bedroom and en-suite bathroom. Highlever Road is located in the Royal Borough of Kensington & Chelsea, within easy reach of Golborne Road, Notting Hill and Portobello Road. Latimer Road tube station (Circle and Hammersmith and City) is within walking distance along with easy access to the A40 for routes in and out of London.

3 Bedrooms | 2 Reception Rooms | 3 Bathrooms

North Kensington Office

59 St Helen's Gardens, London W10 6LN

020 8960 0181

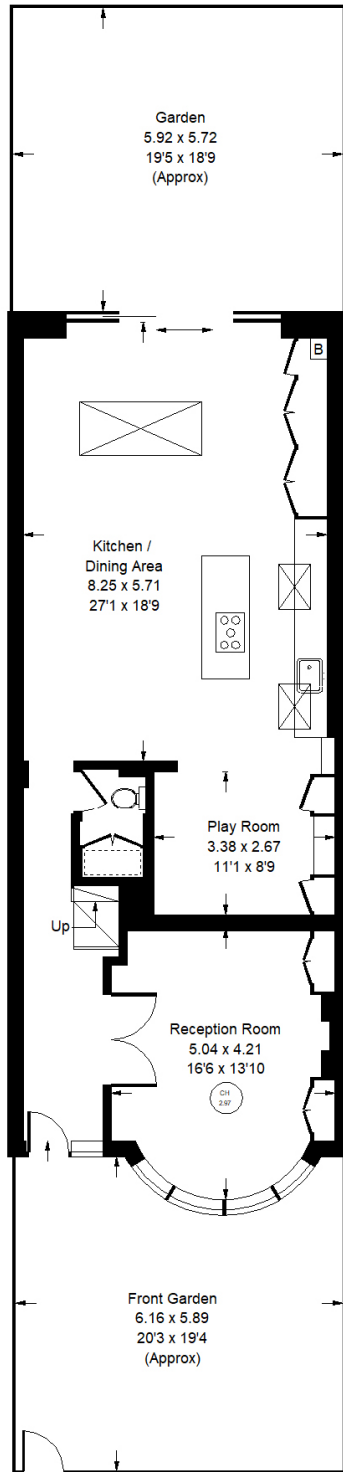
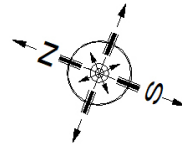
sales.nkn@mountgrangeheritage.co.uk

Other offices Kensington - Notting Hill

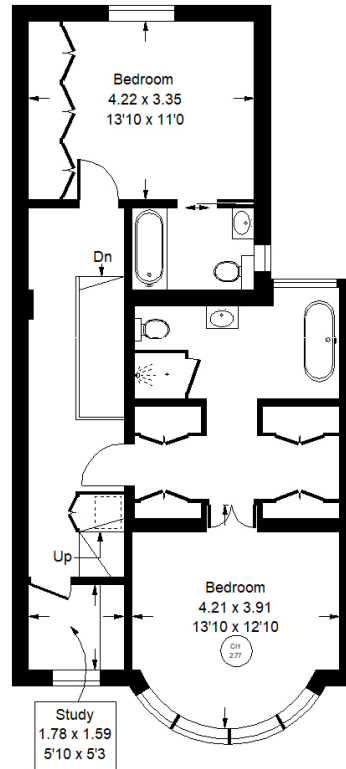
mountgrangeheritage.co.uk

Highlever Road, W10

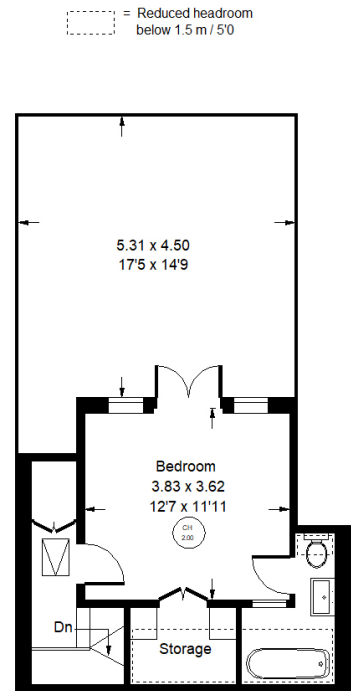
Approx. Gross Internal Area
183.6 sq m / 1976 sq ft



Ground Floor



First Floor



Second Floor

Whilst every attempt has been made to ensure the accuracy of the floor plan, measurements are approximate and not to scale.
No guarantee is given on the total square footage of the property quoted on the plan. Figures given are for guidance.
Plan is for illustration purposes only, not to be used for valuations.

IMPORTANT NOTICE

Mountgrange Heritage and their clients give notice that: 1) They are not authorised to make or give any representations or warranties in relation to the property either here or elsewhere, either on their own behalf or on behalf of their client or otherwise. They assume no responsibility for any statement that may be made in these particulars. These particulars do not form part of any offer or contract and must not be relied upon as statements or representations of fact. 2) Any areas, measurements or distances are approximate. The text, photographs and plans are for guidance only and are not necessarily comprehensive. It should not be assumed that the property has all necessary planning, building regulation or other consents and Mountgrange Heritage have not tested any services, equipment or facilities. Purchasers must satisfy themselves by inspection or otherwise.