



**MOUNTGRANGE**  
HERITAGE



## Highwood Court, NW10

£669 per week Fees May Apply

A three bedroom modern mews style house located within a private gated development.

3 Bedrooms | 1 Reception Room | 2 Bathrooms

### North Kensington Office

59 St Helen's Gardens, London W10 6LN

020 8960 0181

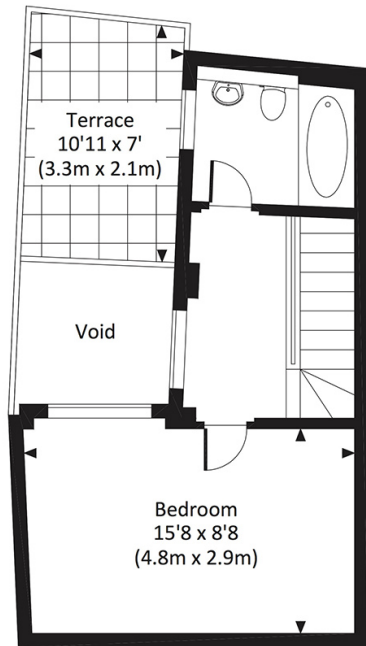
[lettings.nkn@mountgrangeheritage.co.uk](mailto:lettings.nkn@mountgrangeheritage.co.uk)

Other offices Kensington - Notting Hill

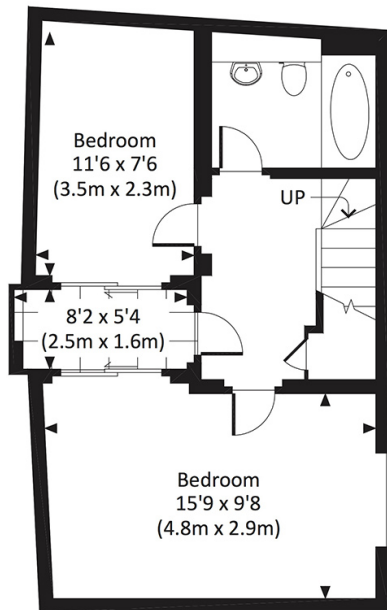
[mountgrangeheritage.co.uk](http://mountgrangeheritage.co.uk)

# HIGH STREET, NW10

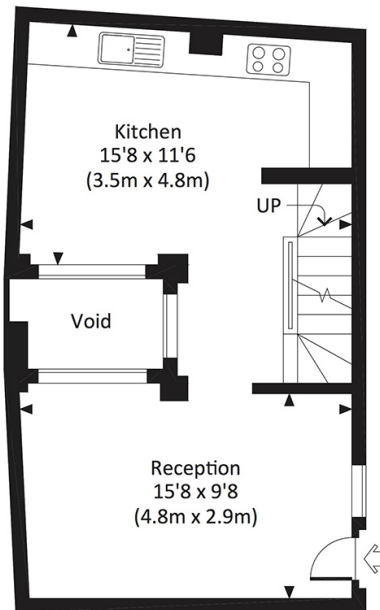
Approx. gross internal area  
1034 Sq.Ft. / 96.1 Sq.M.



SECOND FLOOR



GROUND FLOOR



FIRST FLOOR



All measurements have been made in accordance with RICS Code of Measuring Practice which are approximate only and only for illustrative purposes. For the avoidance of doubt, Dowling Jones Design shall not be liable for any reliance on these measurements. © 2016 www.dowlingjones.com 020 7610 9933

## IMPORTANT NOTICE

Mountgrange Heritage and their clients give notice that: 1) They are not authorised to make or give any representations or warranties in relation to the property either here or elsewhere, either on their own behalf or on behalf of their client or otherwise. They assume no responsibility for any statement that may be made in these particulars. These particulars do not form part of any offer or contract and must not be relied upon as statements or representations of fact. 2) Any areas, measurements or distances are approximate. The text, photographs and plans are for guidance only and are not necessarily comprehensive. It should not be assumed that the property has all necessary planning, building regulation or other consents and Mountgrange Heritage have not tested any services, equipment or facilities. Purchasers must satisfy themselves by inspection or otherwise.