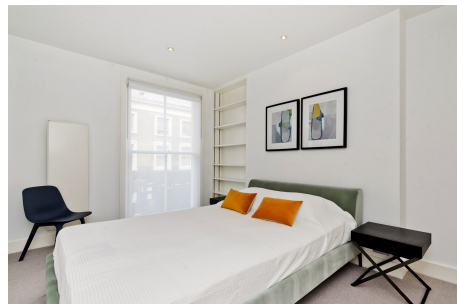




**MOUNTGRANGE**  
HERITAGE



## Elgin Crescent, W11

**£1,800 per week** Fees May Apply

Newly refurbished flat on this fashionable street in the heart of Notting Hill close to all the shops and restaurants around Portobello Road and just a short walk from Notting Hill Gate underground station. The property has been refurbished in a contemporary style with wooden flooring and high quality kitchen and bathrooms. Available for SHORT LET.

**2 Bedrooms | 1 Reception Room | 2 Bathrooms**  
**Furnished**

### Notting Hill Office

27 Kensington Park Road, London W11 2EU

020 7221 2277

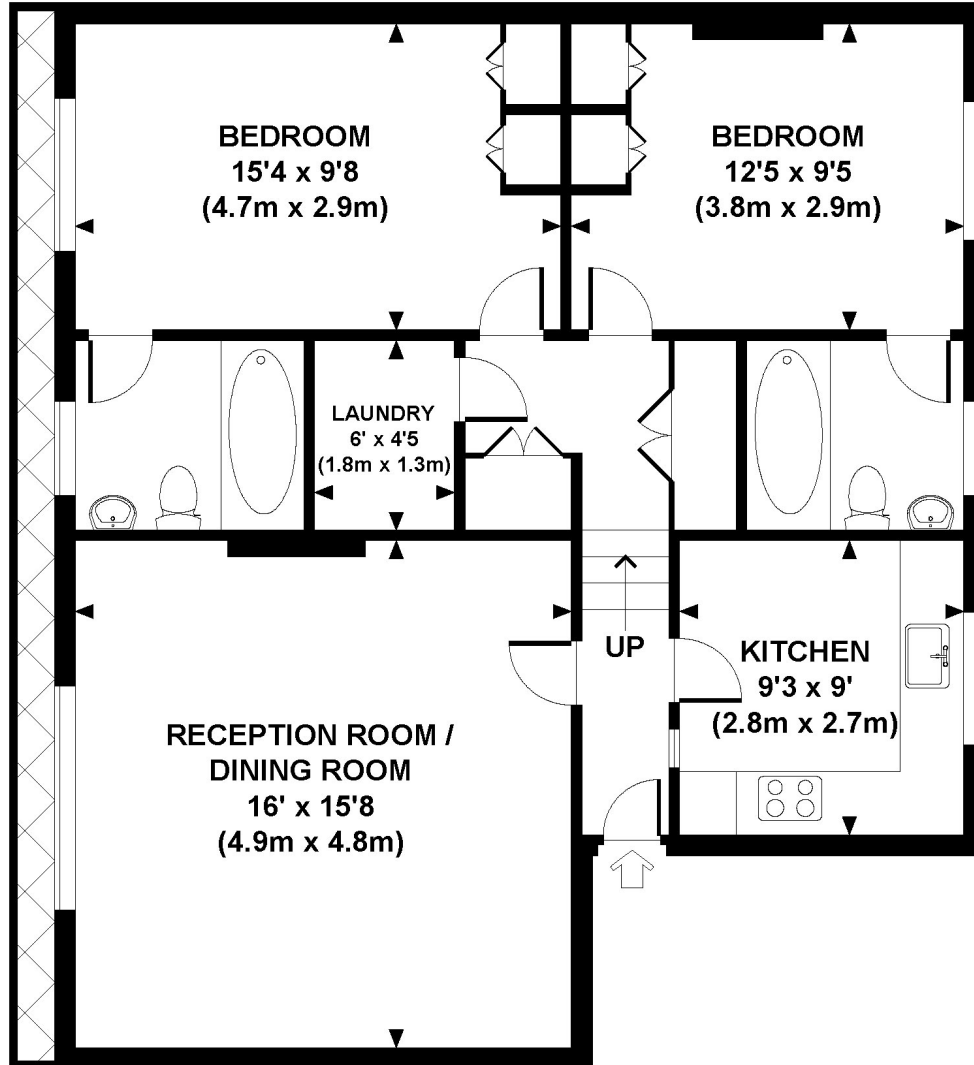
[lettings.nhg@mountgrangeheritage.co.uk](mailto:lettings.nhg@mountgrangeheritage.co.uk)

**Other offices** Kensington - North Kensington

[mountgrangeheritage.co.uk](http://mountgrangeheritage.co.uk)

# ELGIN CRESCENT, W11

Approx. gross internal area  
821 Sq.Ft. / 76.3 Sq.M.



FIRST FLOOR



All measurements are approximate and for illustration purposes only as defined by the RICS Code of Measuring Practice © 2012. Dowling Jones Design www.dowlingjones.com 020 7610 9933

## IMPORTANT NOTICE

Mountgrange Heritage and their clients give notice that: 1) They are not authorised to make or give any representations or warranties in relation to the property either here or elsewhere, either on their own behalf or on behalf of their client or otherwise. They assume no responsibility for any statement that may be made in these particulars. These particulars do not form part of any offer or contract and must not be relied upon as statements or representations of fact. 2) Any areas, measurements or distances are approximate. The text, photographs and plans are for guidance only and are not necessarily comprehensive. It should not be assumed that the property has all necessary planning, building regulation or other consents and Mountgrange Heritage have not tested any services, equipment or facilities. Purchasers must satisfy themselves by inspection or otherwise.