



**MOUNTGRANGE**  
HERITAGE



## Ladbroke Grove, W10

**£715 per week** Fees May Apply

Beautifully presented two-bedroom raised ground floor apartment set within an attractive period building in Ladbroke Grove.

**2 Bedrooms | 1 Reception Room | 1 Bathroom**  
**Unfurnished**

### North Kensington Office

59 St Helen's Gardens, London W10 6LN

020 8960 0181

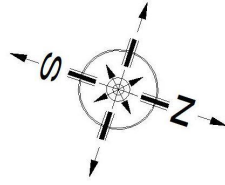
[lettings.nkn@mountgrangeheritage.co.uk](mailto:lettings.nkn@mountgrangeheritage.co.uk)


**Other offices** Kensington - Notting Hill

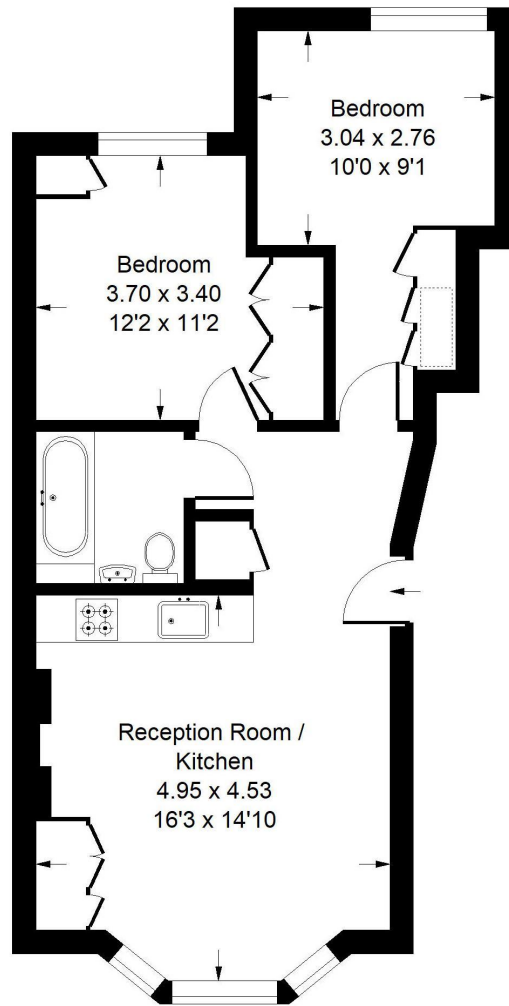
[mountgrangeheritage.co.uk](http://mountgrangeheritage.co.uk)

# Ladbroke Grove, W10

Approx. Gross Internal Area  
55 sq m / 592 sq ft



 = Reduced headroom  
below 1.5 m / 5'0



## Raised Ground Floor

Whilst every attempt has been made to ensure the accuracy of the floor plan, measurements are approximate and not to scale.  
No guarantee is given on the total square footage of the property quoted on the plan. Figures given are for guidance.  
Plan is for illustration purposes only, not to be used for valuations.

## IMPORTANT NOTICE

Mountgrange Heritage and their clients give notice that: 1) They are not authorised to make or give any representations or warranties in relation to the property either here or elsewhere, either on their own behalf or on behalf of their client or otherwise. They assume no responsibility for any statement that may be made in these particulars. These particulars do not form part of any offer or contract and must not be relied upon as statements or representations of fact. 2) Any areas, measurements or distances are approximate. The text, photographs and plans are for guidance only and are not necessarily comprehensive. It should not be assumed that the property has all necessary planning, building regulation or other consents and Mountgrange Heritage have not tested any services, equipment or facilities. Purchasers must satisfy themselves by inspection or otherwise.