

Hill Farm Road, W10

£900 per week Fees May Apply

A beautifully presented three double bedroom ground floor flat which benefits from a private south-facing garden. The property offers a front garden, wooden flooring, two bathrooms and lots of storage throughout. Hill Farm Road is located in the North Kensington in the Royal Borough of Kensington & Chelsea and within easy reach of Portobello Road, Golborne Road and Notting Hill.

**3 Bedrooms | 1 Reception Room | 2 Bathrooms
Furnished**

North Kensington Office

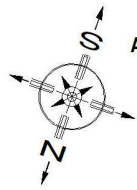
59 St Helen's Gardens, London W10 6LN
020 8960 0181

lettings.nkn@mountgrangeheritage.co.uk

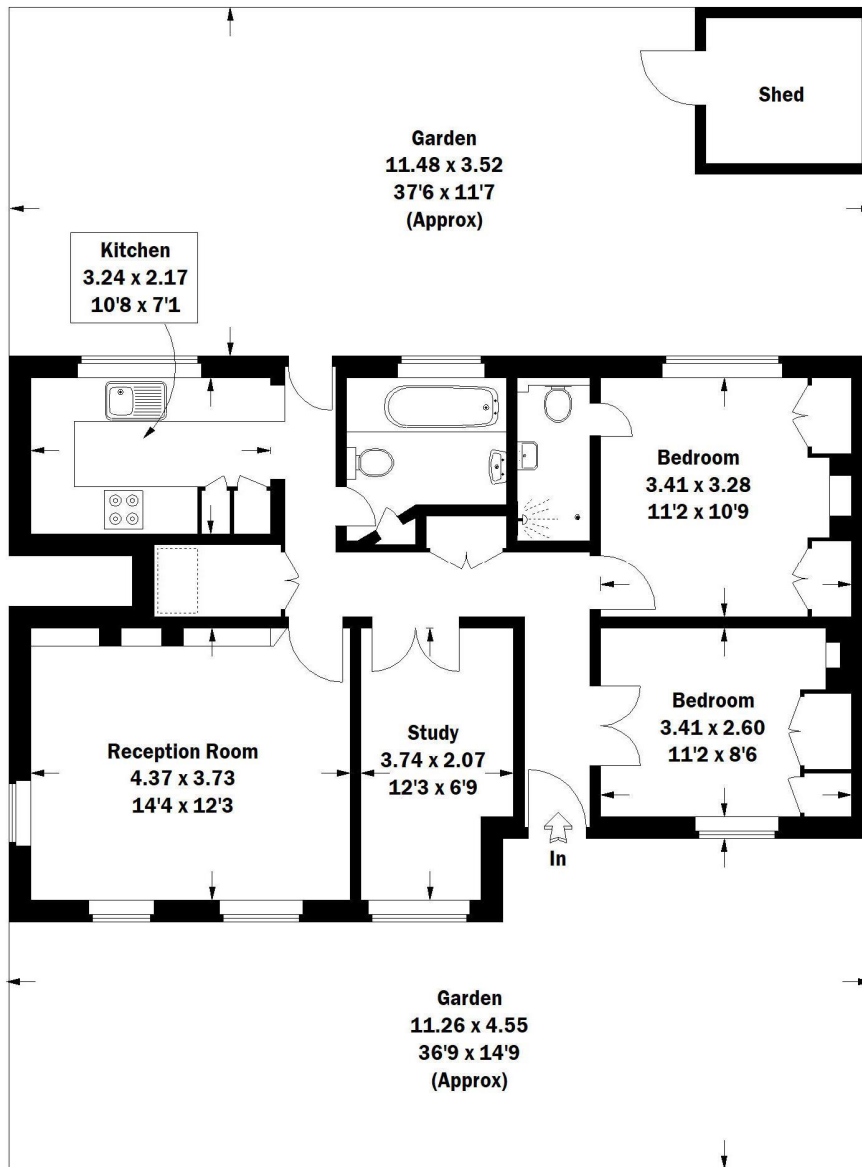
Other offices Kensington - Notting Hill

mountgrangeheritage.co.uk

Hill Farm Road, W10



Approximate Gross Internal Area = 73.5 sq m / 791 sq ft



Ground Floor

 = Reduced headroom below 1.5 m / 5'0

Whilst every attempt has been made to ensure the accuracy of the floor plan, measurements are approximate and not to scale. No guarantee is given on the total square footage of the property quoted on the plan. Figures given are for guidance. Plan is for illustration purposes only.

IMPORTANT NOTICE

Mountgrange Heritage and their clients give notice that: 1) They are not authorised to make or give any representations or warranties in relation to the property either here or elsewhere, either on their own behalf or on behalf of their client or otherwise. They assume no responsibility for any statement that may be made in these particulars. These particulars do not form part of any offer or contract and must not be relied upon as statements or representations of fact. 2) Any areas, measurements or distances are approximate. The text, photographs and plans are for guidance only and are not necessarily comprehensive. It should not be assumed that the property has all necessary planning, building regulation or other consents and Mountgrange Heritage have not tested any services, equipment or facilities. Purchasers must satisfy themselves by inspection or otherwise.