



MOUNTGRANGE
HERITAGE



Phillimore Gardens, W8

£1,200 per week Fees May Apply

A rare opportunity to live in this beautiful two bedroom flat on the first floor of this prestigious street in Kensington. The property is touching distance away from Holland Park and has a wonderful large west facing reception room. Natural light floods through this apartment and the two bedrooms both have fantastic built in storage, double height ceilings and a semi open kitchen.

2 Bedrooms | 1 Reception Room | 2 Bathrooms
Unfurnished

Kensington Office

13b Stratford Road, London W8 6RF
020 7937 9976

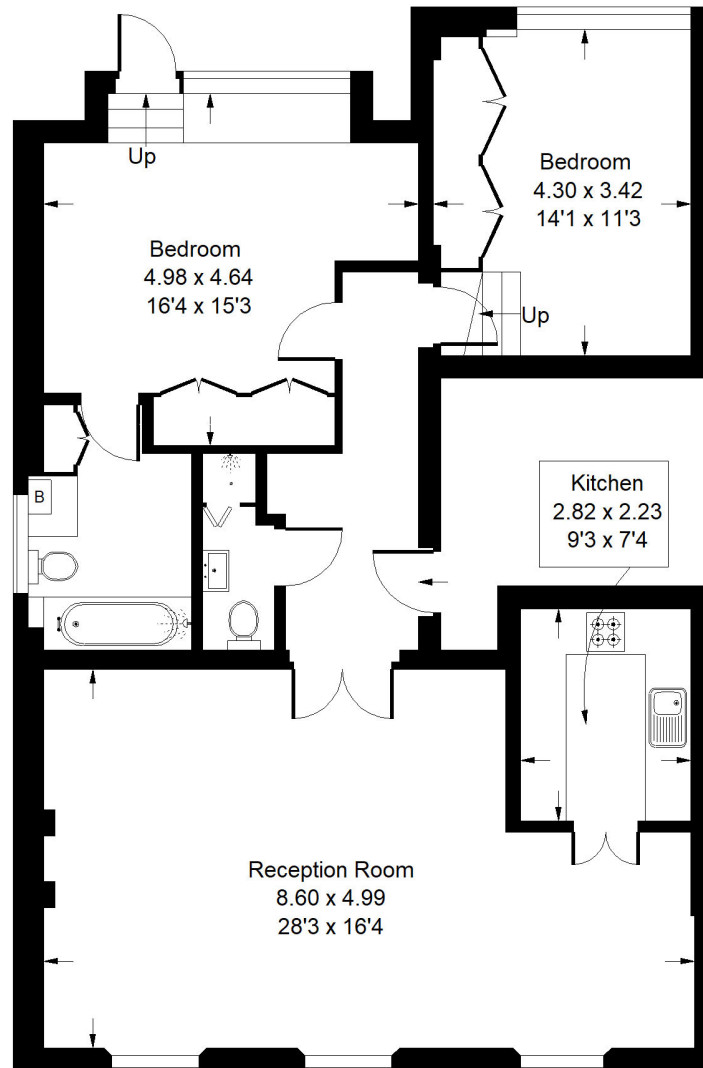
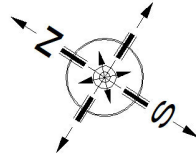
lettings.ken@mountgrangeheritage.co.uk

Other offices North Kensington - Notting Hill

mountgrangeheritage.co.uk

Philimore Gardens, W8

Approx. Gross Internal Area
97.5 sq m / 1049 sq ft



First Floor

Whilst every attempt has been made to ensure the accuracy of the floor plan, measurements are approximate and not to scale.
No guarantee is given on the total square footage of the property quoted on the plan. Figures given are for guidance.
Plan is for illustration purposes only, not to be used for valuations.

IMPORTANT NOTICE

Mountgrange Heritage and their clients give notice that: 1) They are not authorised to make or give any representations or warranties in relation to the property either here or elsewhere, either on their own behalf or on behalf of their client or otherwise. They assume no responsibility for any statement that may be made in these particulars. These particulars do not form part of any offer or contract and must not be relied upon as statements or representations of fact. 2) Any areas, measurements or distances are approximate. The text, photographs and plans are for guidance only and are not necessarily comprehensive. It should not be assumed that the property has all necessary planning, building regulation or other consents and Mountgrange Heritage have not tested any services, equipment or facilities. Purchasers must satisfy themselves by inspection or otherwise.