



MOUNTGRANGE
HERITAGE



Sloane Street, SW1X

£2,150 per week Fees May Apply

A newly refurbished three-bedroom, two-bathroom mansion flat located on the fourth floor of a prestigious building on Sloane Street, SW1X. This elegant property offers spacious living with two reception rooms and benefits from lift access and porter services, ensuring convenience and security. Ideally situated within close proximity to Knightsbridge Underground Station and the expansive Hyde Park, it provides excellent transport links and access to some of London™s finest green spaces. This exceptional residence combines contemporary comfort with a prime central London location.

3 Bedrooms | 2 Reception Rooms | 2 Bathrooms
Furnished

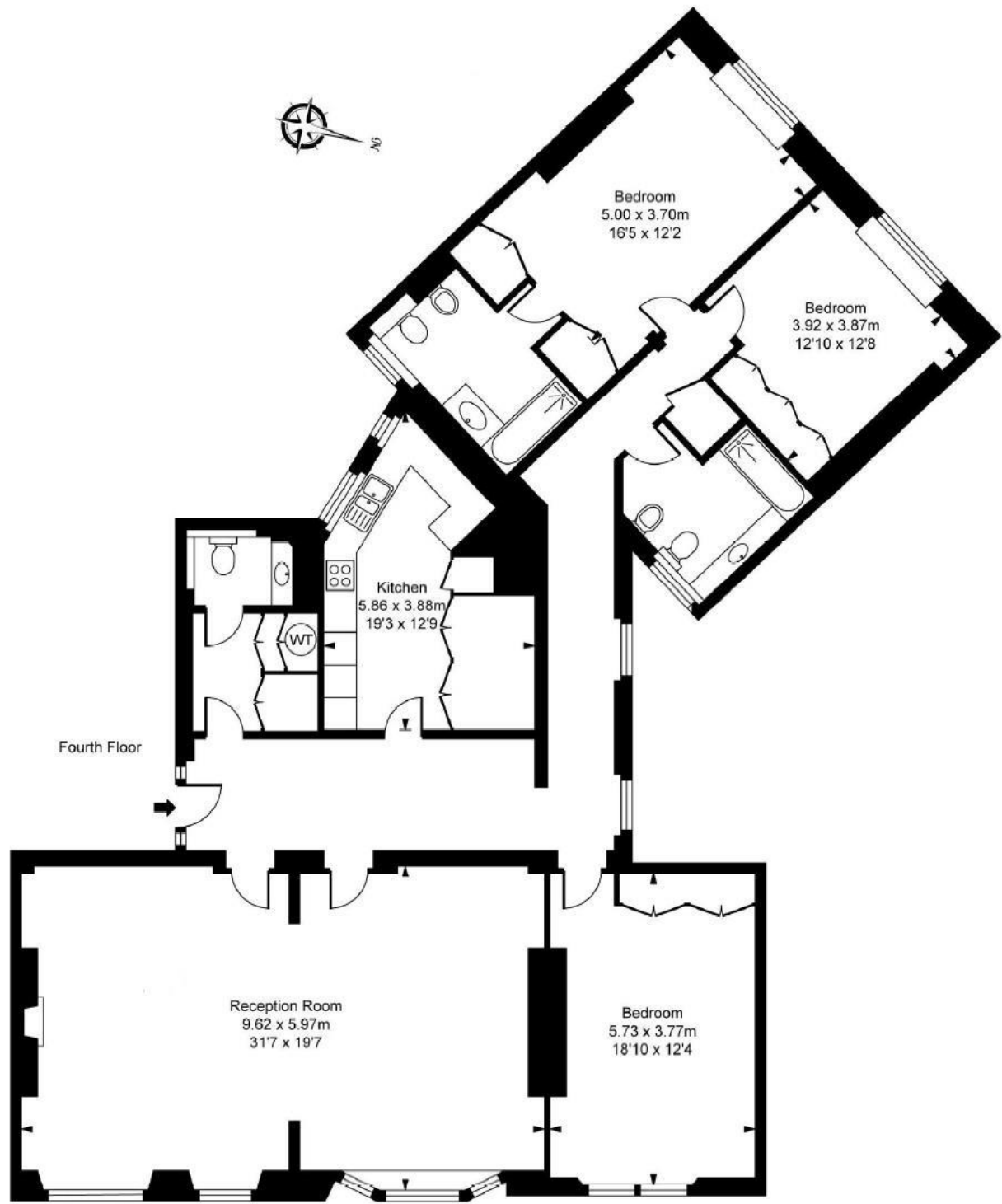
Kensington Office

13b Stratford Road, London W8 6RF
020 7937 9976

lettings.ken@mountgrangeheritage.co.uk

Other offices North Kensington - Notting Hill

mountgrangeheritage.co.uk



Sloane Street, SW1X
 Approximate Gross Internal Area
 191.71 sq m / 2,064 sq ft

IMPORTANT NOTICE

Mountgrange Heritage and their clients give notice that: 1) They are not authorised to make or give any representations or warranties in relation to the property either here or elsewhere, either on their own behalf or on behalf of their client or otherwise. They assume no responsibility for any statement that may be made in these particulars. These particulars do not form part of any offer or contract and must not be relied upon as statements or representations of fact. 2) Any areas, measurements or distances are approximate. The text, photographs and plans are for guidance only and are not necessarily comprehensive. It should not be assumed that the property has all necessary planning, building regulation or other consents and Mountgrange Heritage have not tested any services, equipment or facilities. Purchasers must satisfy themselves by inspection or otherwise.