

## Portobello Road, W11

£1,750 per week Fees May Apply

A stunning architect designed upper maisonette which is flooded with natural light and positioned on a prominent corner of Portobello Road. This dynamic apartment has a great range of balanced accommodation over three floors, with its own private ground floor entrance. The first floor offers a large reception room with wooden floors, a cloakroom/WC and a bespoke kitchen which leads out to a brilliant terrace overlooking Tavistock Piazza. There are three bedrooms and two bathrooms on the upper floors, along with a rather special indoor garden on the top of the house. Located on the famous Portobello Road and within easy walking distance of All Saints Road, Golborne Road, Notting Hill Gate and Ladbrooke Grove. The list of fabulous places to eat, drink and shop in the immediate area is almost endless.

**3 Bedrooms | 1 Reception Room | 2 Bathrooms**  
**Unfurnished**

### Notting Hill Office

27 Kensington Park Road, London W11 2EU  
020 7221 2277

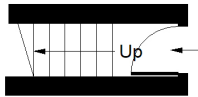
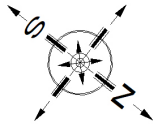
[lettings.nhg@mountgrangeheritage.co.uk](mailto:lettings.nhg@mountgrangeheritage.co.uk)

**Other offices** Kensington - North Kensington

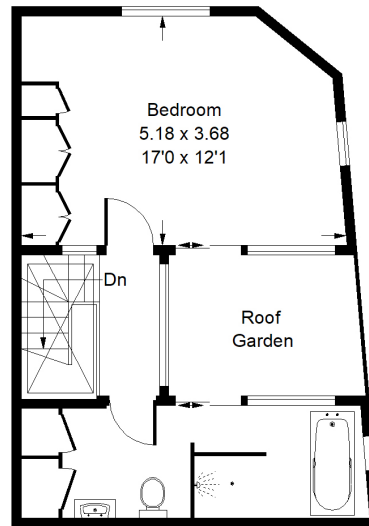
[mountgrangeheritage.co.uk](http://mountgrangeheritage.co.uk)

# Portobello Road, W11

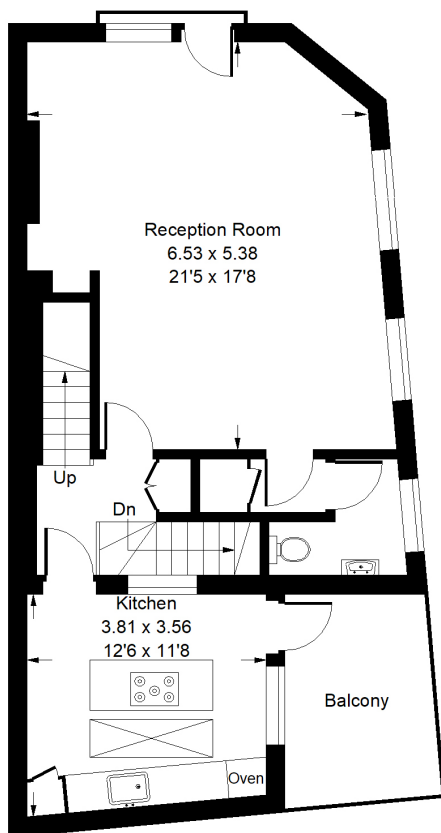
Approx. Gross Internal Area  
142.8 sq m / 1537 sq ft



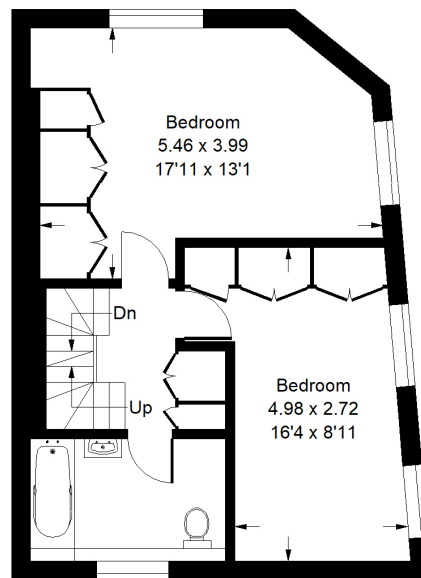
Ground Floor



Third Floor



First Floor



Second Floor

Whilst every attempt has been made to ensure the accuracy of the floor plan, measurements are approximate and not to scale. No guarantee is given on the total square footage of the property quoted on the plan. Figures given are for guidance. Plan is for illustration purposes only, not to be used for valuations.

## IMPORTANT NOTICE

Mountgrange Heritage and their clients give notice that: 1) They are not authorised to make or give any representations or warranties in relation to the property either here or elsewhere, either on their own behalf or on behalf of their client or otherwise. They assume no responsibility for any statement that may be made in these particulars. These particulars do not form part of any offer or contract and must not be relied upon as statements or representations of fact. 2) Any areas, measurements or distances are approximate. The text, photographs and plans are for guidance only and are not necessarily comprehensive. It should not be assumed that the property has all necessary planning, building regulation or other consents and Mountgrange Heritage have not tested any services, equipment or facilities. Purchasers must satisfy themselves by inspection or otherwise.