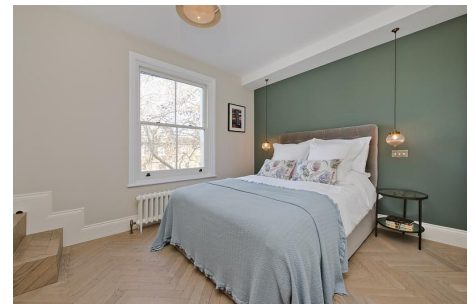




**MOUNTGRANGE**  
HERITAGE



## Leamington Road Villas, W11

£750,000

An immaculate, newly refurbished flat in a period conversion. This bright one bedroom apartment arranged on the second floor has an open plan reception room with Parquet flooring, fully fitted kitchen and ample storage. The double bedroom has an ensuite bathroom and built in storage. The flat also benefits from a study accessed from the communal hall way. Leamington Road Villas is just moments from Portobello Road and a five minute walk from Westbourne Grove and Golborne Road. Westbourne Park and Ladbrooke Grove underground station for the Circle, Hammersmith and City Line are within close proximity.

**1 Bedroom | 1 Reception Room | 1 Bathroom**

### North Kensington Office

59 St Helen's Gardens, London W10 6LN

020 8960 0181

[sales.nkn@mountgrangeheritage.co.uk](mailto:sales.nkn@mountgrangeheritage.co.uk)

**Other offices** Kensington - Notting Hill

[mountgrangeheritage.co.uk](http://mountgrangeheritage.co.uk)

### **IMPORTANT NOTICE**

Mountgrange Heritage and their clients give notice that: 1) They are not authorised to make or give any representations or warranties in relation to the property either here or elsewhere, either on their own behalf or on behalf of their client or otherwise. They assume no responsibility for any statement that may be made in these particulars. These particulars do not form part of any offer or contract and must not be relied upon as statements or representations of fact. 2) Any areas, measurements or distances are approximate. The text, photographs and plans are for guidance only and are not necessarily comprehensive. It should not be assumed that the property has all necessary planning, building regulation or other consents and Mountgrange Heritage have not tested any services, equipment or facilities. Purchasers must satisfy themselves by inspection or otherwise.