

Portobello Road, W11

£995 per week Fees May Apply

Stylishly furnished, ideally located and with breath taking views, this flat is the perfect flat for anyone, in the heart of Portobello. Boasting two good sized bedrooms, an eat in kitchen fully equipped with state of the art appliances, and a reception room and south-west facing terrace looking out over the whole of London. The rent is inclusive of utilities.

**2 Bedrooms | 1 Reception Room | 1 Bathroom
Furnished**

Notting Hill Office

27 Kensington Park Road, London W11 2EU

020 7221 2277

lettings.nhg@mountgrangeheritage.co.uk

Other offices Kensington - North Kensington

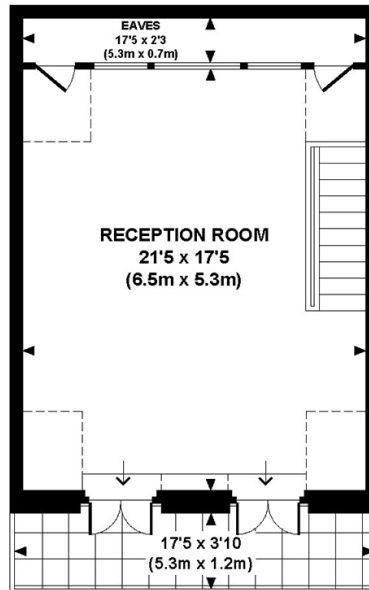
mountgrangeheritage.co.uk

PORTOBELLO ROAD, W11

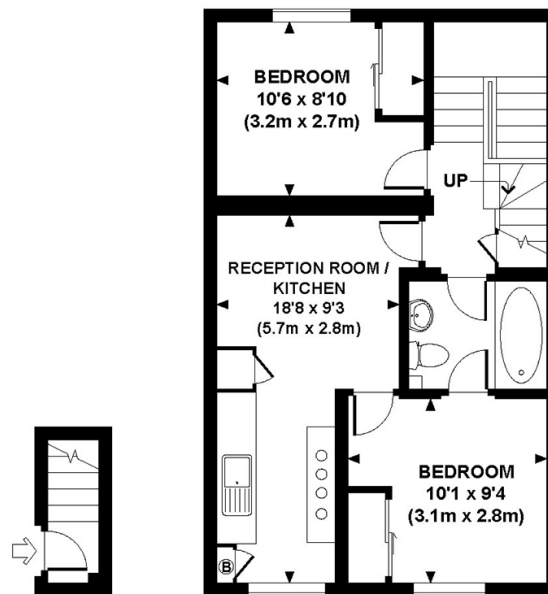
Approx. gross internal area

818 Sq.Ft. / 76.0 Sq.M.

914 Sq.Ft. / 84.9 Sq.M. Inc. Restricted Height Area & Eaves



FOURTH FLOOR



SECOND FLOOR THIRD FLOOR



All measurements are approximate and for illustration purposes only as defined by the RICS Code of Measuring Practice © 2013
Dowling Jones Design www.dowlingjones.com 020 7610 9933

IMPORTANT NOTICE

Mountgrange Heritage and their clients give notice that: 1) They are not authorised to make or give any representations or warranties in relation to the property either here or elsewhere, either on their own behalf or on behalf of their client or otherwise. They assume no responsibility for any statement that may be made in these particulars. These particulars do not form part of any offer or contract and must not be relied upon as statements or representations of fact. 2) Any areas, measurements or distances are approximate. The text, photographs and plans are for guidance only and are not necessarily comprehensive. It should not be assumed that the property has all necessary planning, building regulation or other consents and Mountgrange Heritage have not tested any services, equipment or facilities. Purchasers must satisfy themselves by inspection or otherwise.