

MOUNTGRANGE
HERITAGE



Elm Park Road, SW3

£595 per week Fees May Apply

A bright well-presented one bedroom flat on the third of this period conversion in Chelsea. The flat offers a generous double bedroom with built-in storage, a semi open-plan kitchen, large sash windows in every room, new carpets and a fully tiled shower room. The property has been recently refurbished.

1 Bedroom | 1 Reception Room | 1 Bathroom
Furnished

Kensington Office

13b Stratford Road, London W8 6RF
020 7937 9976

lettings.ken@mountgrangeheritage.co.uk

Other offices North Kensington - Notting Hill

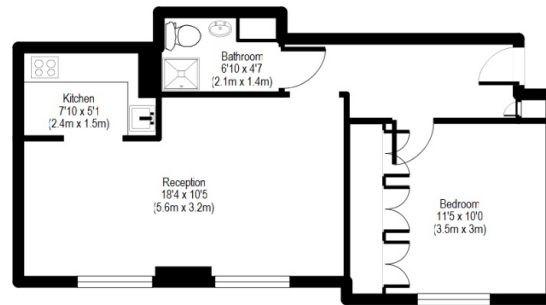
mountgrangeheritage.co.uk

Elm Park Road

APPROX GROSS INTERNAL FLOOR AREA: 418 sq. ft / 39 sq. m



Third Floor Flat



*Whilst every attempt has been made to ensure accuracy of the floor plan contained here, all measurements are to be considered approximate and no responsibility is taken for any error or mis-statement. This plan is for illustrative purposes only, and should be treated as such by any prospective purchaser.

IMPORTANT NOTICE

Mountgrange Heritage and their clients give notice that: 1) They are not authorised to make or give any representations or warranties in relation to the property either here or elsewhere, either on their own behalf or on behalf of their client or otherwise. They assume no responsibility for any statement that may be made in these particulars. These particulars do not form part of any offer or contract and must not be relied upon as statements or representations of fact. 2) Any areas, measurements or distances are approximate. The text, photographs and plans are for guidance only and are not necessarily comprehensive. It should not be assumed that the property has all necessary planning, building regulation or other consents and Mountgrange Heritage have not tested any services, equipment or facilities. Purchasers must satisfy themselves by inspection or otherwise.