

MOUNTGRANGE
HERITAGE



Bassett Road, London W10

£775 per week Fees May Apply

Within an elegant double-fronted villa this stylish split-level property is superbly presented with excellent entertaining space and two generous bedrooms. The property has huge windows to front and rear which enhance the natural light and has a large private garden perfect for al fresco dining during the summer months. The property is located a short walk away from Ladbroke Grove underground station (Hammersmith & City and Circle lines).

2 Bedrooms | 1 Reception Room | 1 Bathroom
Unfurnished

North Kensington Office

59 St Helen's Gardens, London W10 6LN
020 8960 0181

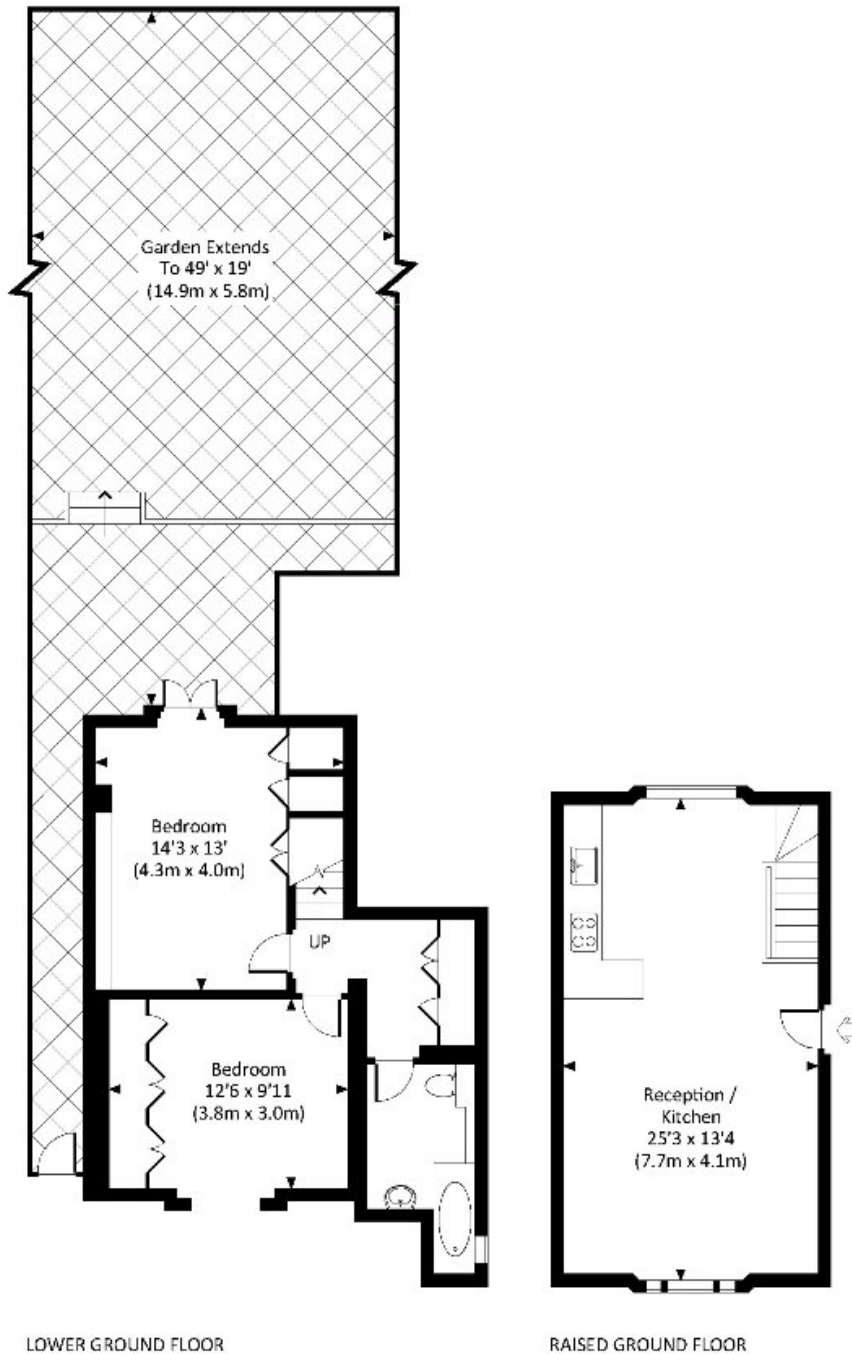
lettings.nkn@mountgrangeheritage.co.uk

Other offices Kensington - Notting Hill

mountgrangeheritage.co.uk

BASSETT ROAD, W10

Approx. gross internal area
761 Sq.Ft. / 70.7 Sq.M.



All measurements have been made in accordance with RICS Code of Measuring Practice which are approximate only and only for illustrative purposes. For the avoidance of doubt, Dowling Jones Design shall not be liable for any reliance on these measurements. ID: 2325 www.dowlingjones.com 020 7536 2958

IMPORTANT NOTICE

Mountgrange Heritage and their clients give notice that: 1) They are not authorised to make or give any representations or warranties in relation to the property either here or elsewhere, either on their own behalf or on behalf of their client or otherwise. They assume no responsibility for any statement that may be made in these particulars. These particulars do not form part of any offer or contract and must not be relied upon as statements or representations of fact. 2) Any areas, measurements or distances are approximate. The text, photographs and plans are for guidance only and are not necessarily comprehensive. It should not be assumed that the property has all necessary planning, building regulation or other consents and Mountgrange Heritage have not tested any services, equipment or facilities. Purchasers must satisfy themselves by inspection or otherwise.