



**MOUNTGRANGE**  
HERITAGE



## Highwood Court, High Street, NW10

**£615 per week** Fees May Apply

Stylish and modern mews property in a private gated development of nine sustainable houses surrounding a communal courtyard. This property is arranged over three levels with excellent light and a cool Nordic interior. The property has three bedrooms, two bathrooms, a large open plan kitchen reception room and a terrace off the master bedroom.

**3 Bedrooms | 1 Reception Room | 2 Bathrooms**  
**Furnished**

### North Kensington Office

59 St Helen's Gardens, London W10 6LN  
020 8960 0181

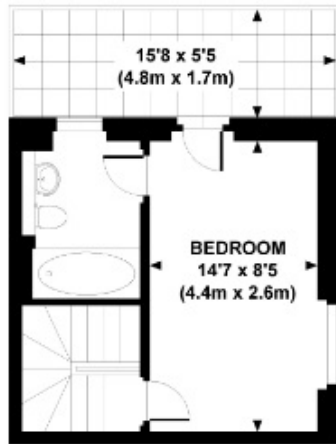
[lettings.nkn@mountgrangeheritage.co.uk](mailto:lettings.nkn@mountgrangeheritage.co.uk)

**Other offices** Kensington - Notting Hill

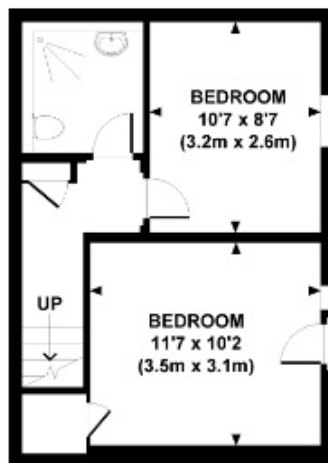
[mountgrangeheritage.co.uk](http://mountgrangeheritage.co.uk)

# HIGHWOOD COURT, HIGH STREET HARLESDEN, NW10

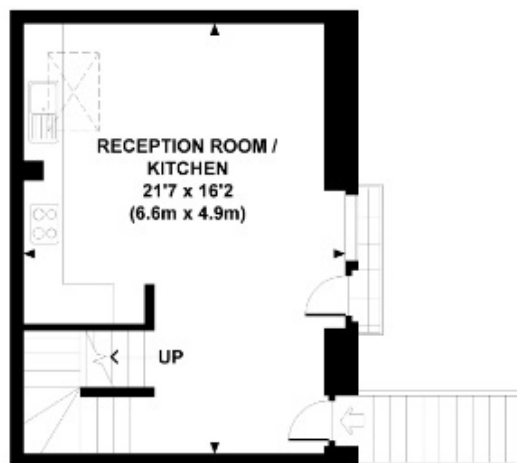
Approx. gross internal area  
874 Sq.Ft. / 81.2 Sq.M.



SECOND FLOOR



GROUND FLOOR



FIRST FLOOR



All measurements are approximate and for illustration purposes only as defined by the RICS Code of Measuring Practice © 2013. Dowling Jones Design www.dowlingjones.com 020 7510 9633

## IMPORTANT NOTICE

Mountgrange Heritage and their clients give notice that: 1) They are not authorised to make or give any representations or warranties in relation to the property either here or elsewhere, either on their own behalf or on behalf of their client or otherwise. They assume no responsibility for any statement that may be made in these particulars. These particulars do not form part of any offer or contract and must not be relied upon as statements or representations of fact. 2) Any areas, measurements or distances are approximate. The text, photographs and plans are for guidance only and are not necessarily comprehensive. It should not be assumed that the property has all necessary planning, building regulation or other consents and Mountgrange Heritage have not tested any services, equipment or facilities. Purchasers must satisfy themselves by inspection or otherwise.