

**MOUNTGRANGE**  
HERITAGE



## Westbourne Park Road, W11

**£850 per week** Fees May Apply

A beautiful flat on the top floor of this period house which has been redesigned to create loft-style living. The vaulted ceilings and full-height doorways maximise the space and deliver an uber cool apartment which is elegant yet practical. Accommodation comprises of two bedrooms, two bathrooms and an open-plan kitchen/reception room.

**2 Bedrooms | 1 Reception Room | 2 Bathrooms**  
**Unfurnished**

### Notting Hill Office

27 Kensington Park Road, London W11 2EU

020 7221 2277

[lettings.nhg@mountgrangeheritage.co.uk](mailto:lettings.nhg@mountgrangeheritage.co.uk)

**Other offices** Kensington - North Kensington

[mountgrangeheritage.co.uk](http://mountgrangeheritage.co.uk)

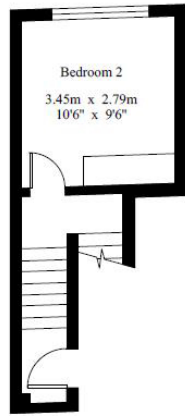
Westbourne Park Road, W11



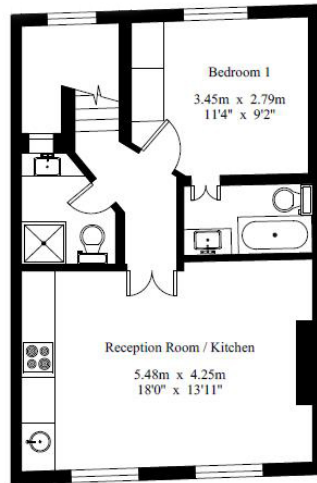
First Floor / Mezz - Gross Internal Area : 10.7 sq.m (115 sq.ft.)

Second - Gross Internal Area : 49.3 sq.m (531 sq.ft.)

Gross Internal Area : 58.1 sq.m (625 sq.ft.)



First Floor / Mezz



Second Floor



For Identification Purposes Only.  
© 2014 Trueplan (UK) Limited (01892) 614 881

### IMPORTANT NOTICE

Mountgrange Heritage and their clients give notice that: 1) They are not authorised to make or give any representations or warranties in relation to the property either here or elsewhere, either on their own behalf or on behalf of their client or otherwise. They assume no responsibility for any statement that may be made in these particulars. These particulars do not form part of any offer or contract and must not be relied upon as statements or representations of fact. 2) Any areas, measurements or distances are approximate. The text, photographs and plans are for guidance only and are not necessarily comprehensive. It should not be assumed that the property has all necessary planning, building regulation or other consents and Mountgrange Heritage have not tested any services, equipment or facilities. Purchasers must satisfy themselves by inspection or otherwise.