



MOUNTGRANGE
HERITAGE



Adam & Eve Mews, W8

£1,961 per week Fees May Apply

Situated in the highly sought-after Adam & Eve Mews, this charming period mews house offers an exceptional rental opportunity. Boasting two well-proportioned bedrooms and two bathrooms, including a stylish en-suite, the property is designed to provide both comfort and practicality. The accommodation features two reception rooms, including a dedicated reading room, perfect for relaxation or working from home.

2 Bedrooms | 2 Reception Rooms | 2 Bathrooms
Furnished/Unfurnished

Kensington Office

13b Stratford Road, London W8 6RF

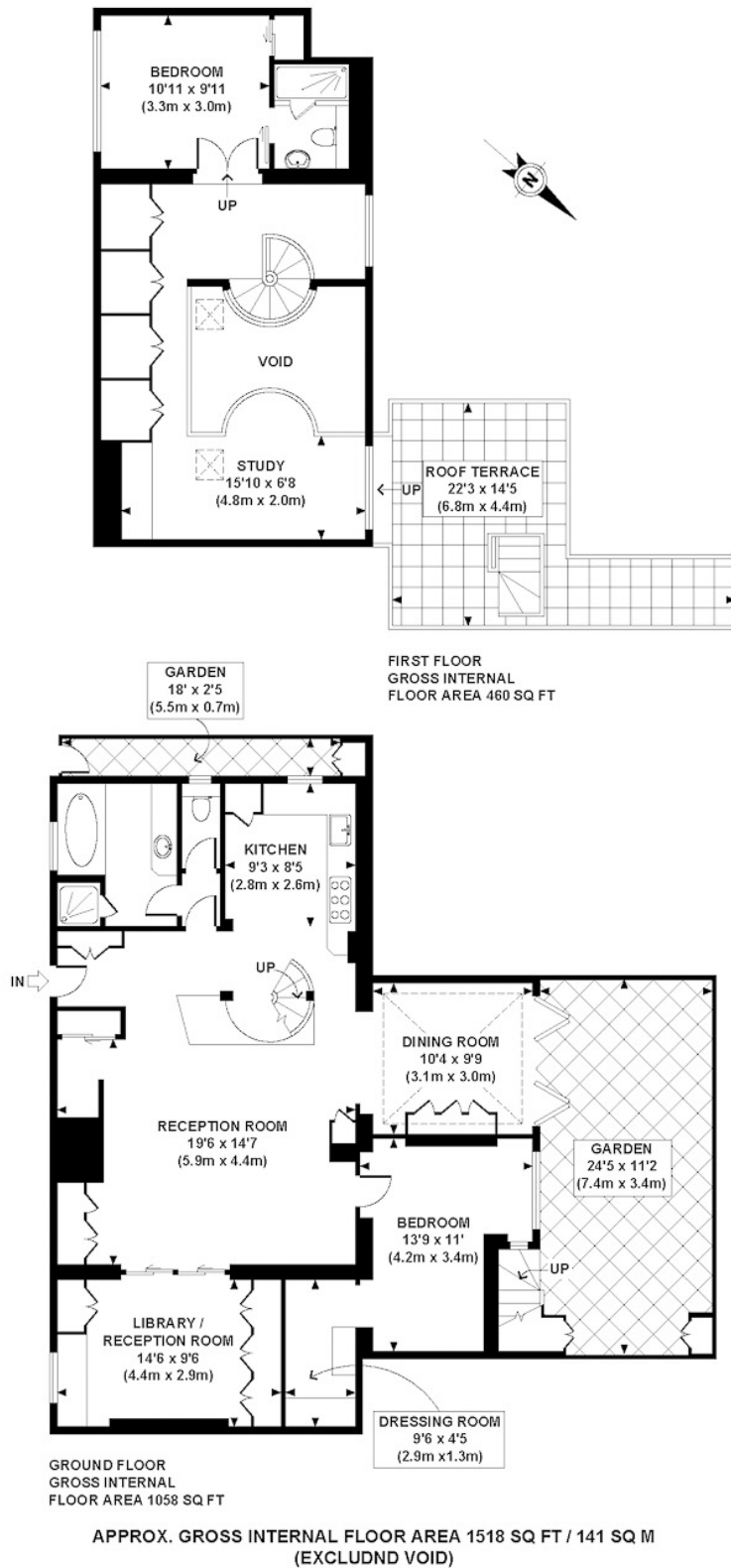
020 7937 9976

lettings.ken@mountgrangeheritage.co.uk

Other offices North Kensington - Notting Hill

mountgrangeheritage.co.uk

Adam & Eve Mews, W8



IMPORTANT NOTICE

Mountgrange Heritage and their clients give notice that: 1) They are not authorised to make or give any representations or warranties in relation to the property either here or elsewhere, either on their own behalf or on behalf of their client or otherwise. They assume no responsibility for any statement that may be made in these particulars. These particulars do not form part of any offer or contract and must not be relied upon as statements or representations of fact. 2) Any areas, measurements or distances are approximate. The text, photographs and plans are for guidance only and are not necessarily comprehensive. It should not be assumed that the property has all necessary planning, building regulation or other consents and Mountgrange Heritage have not tested any services, equipment or facilities. Purchasers must satisfy themselves by inspection or otherwise.