

Highlever Road, W10

£1,150 per week Fees May Apply

Delightful family home laid out over three floors with generous Edwardian proportions. This spacious house has many original features retaining its period charm but has been adapted to suit modern family life, with a large eat in kitchen which leads on to a paved garden. Highlever Road is pretty tree lined street in the heart of the St Quintin Conservation Area.

**4 Bedrooms | 1 Reception Room | 2 Bathrooms
Unfurnished**

North Kensington Office

59 St Helen's Gardens, London W10 6LN
020 8960 0181

lettings.nkn@mountgrangeheritage.co.uk

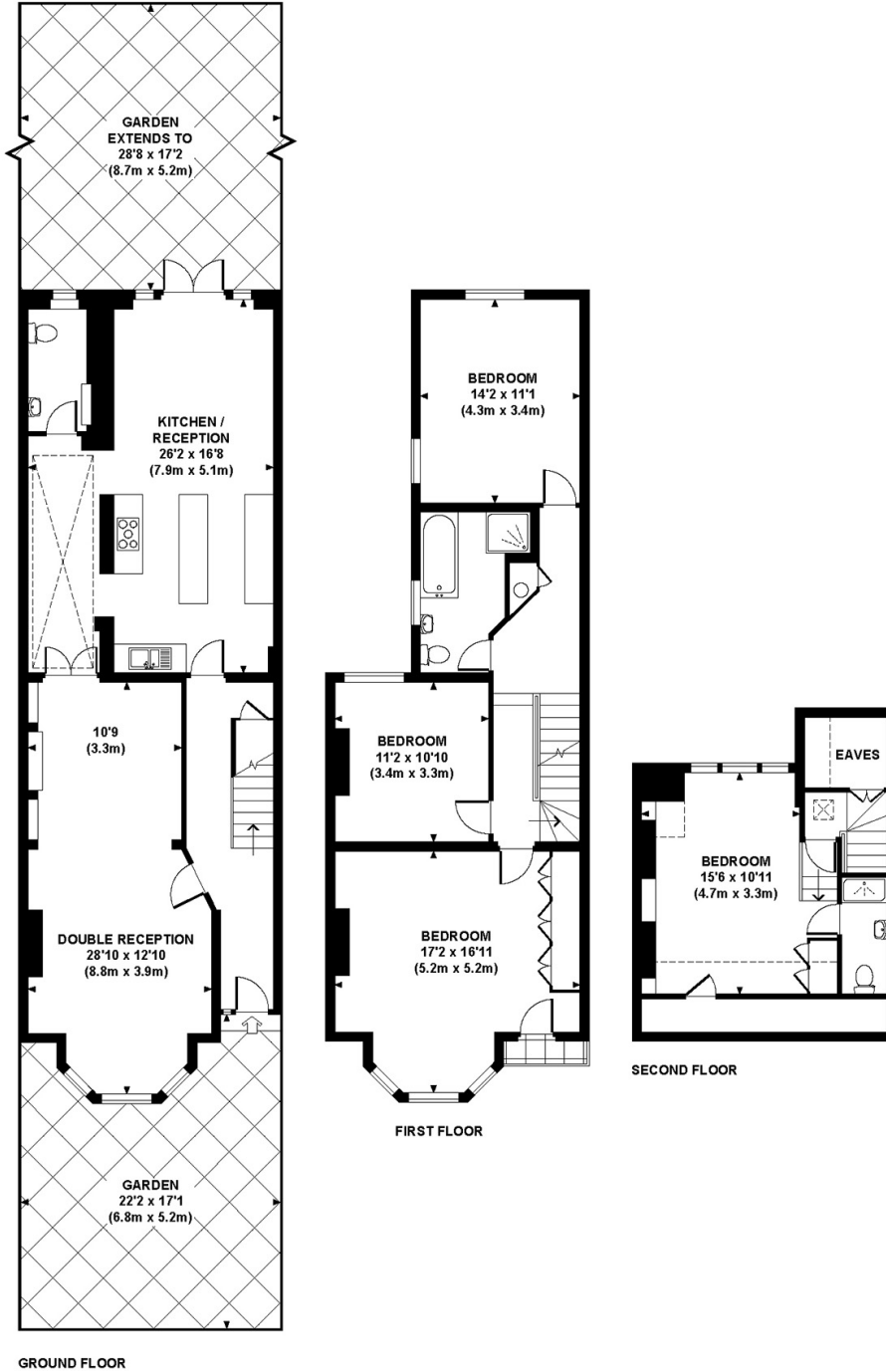
Other offices Kensington - Notting Hill

mountgrangeheritage.co.uk

HIGHLEVER ROAD, W10

Approx. gross internal area 1871 Sq Ft. / 174.0 Sq M.

Approx. gross internal area 1976 Sq Ft. / 183.8 Sq M. Inc. Restricted Height



All measurements are approximate and for illustration purposes only as defined by the RICS Code of Measuring Practice © 2013 Dowling Jones Design www.dowlingjones.com 020 7610 9933

Energy Performance Certificate



Highlever Road, LONDON, W10

Dwelling type: Mid-terrace house
Date of assessment: 02 September 2014
Date of certificate: 03 September 2014

Reference number: 0028-9061-7251-2374-4970
Type of assessment: RdSAP, existing dwelling
Total floor area: 172 m²

Use this document to:

- Compare current ratings of properties to see which properties are more energy efficient
- Find out how you can save energy and money by installing improvement measures

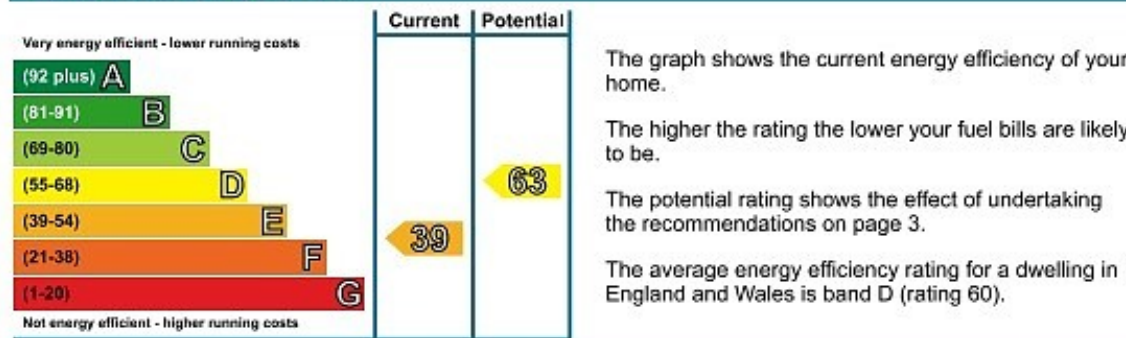
Estimated energy costs of dwelling for 3 years:	£ 7,470
Over 3 years you could save	£ 2,304

Estimated energy costs of this home

	Current costs	Potential costs	Potential future savings
Lighting	£ 315 over 3 years	£ 243 over 3 years	
Heating	£ 6,693 over 3 years	£ 4,539 over 3 years	
Hot Water	£ 462 over 3 years	£ 384 over 3 years	
Totals	£ 7,470	£ 5,166	

These figures show how much the average household would spend in this property for heating, lighting and hot water. This excludes energy use for running appliances like TVs, computers and cookers, and any electricity generated by microgeneration.

Energy Efficiency Rating



Top actions you can take to save money and make your home more efficient

Recommended measures	Indicative cost	Typical savings over 3 years	Available with Green Deal
1 Internal or external wall insulation	£4,000 - £14,000	£ 972	✓
2 Floor insulation	£800 - £1,200	£ 174	✓
3 Draught proofing	£80 - £120	£ 168	✓

See page 3 for a full list of recommendations for this property.

To find out more about the recommended measures and other actions you could take today to save money, visit www.direct.gov.uk/savingenergy or call 0300 123 1234 (standard national rate). The Green Deal may allow you to make your home warmer and cheaper to run at no up-front cost.

IMPORTANT NOTICE

Mountgrange Heritage and their clients give notice that: 1) They are not authorised to make or give any representations or warranties in relation to the property either here or elsewhere, either on their own behalf or on behalf of their client or otherwise. They assume no responsibility for any statement that may be made in these particulars. These particulars do not form part of any offer or contract and must not be relied upon as statements or representations of fact. 2) Any areas, measurements or distances are approximate. The text, photographs and plans are for guidance only and are not necessarily comprehensive. It should not be assumed that the property has all necessary planning, building regulation or other consents and Mountgrange Heritage have not tested any services, equipment or facilities. Purchasers must satisfy themselves by inspection or otherwise.