



MOUNTGRANGE
HERITAGE



St Lukes Mews, W11

£425 per week Fees May Apply

A stunning newly refurbished one bedroom flat, located in the heart of Notting Hill. The flat boasts high ceilings, open-plan kitchen reception with ample space for entertaining as well as relaxing in. Minutes from the buzz of the trendy Westbourne Grove and the local amenities of Portobello Road.

1 Bedroom | 1 Reception Room | 1 Bathroom
Furnished

Notting Hill Office

27 Kensington Park Road, London W11 2EU

020 7221 2277

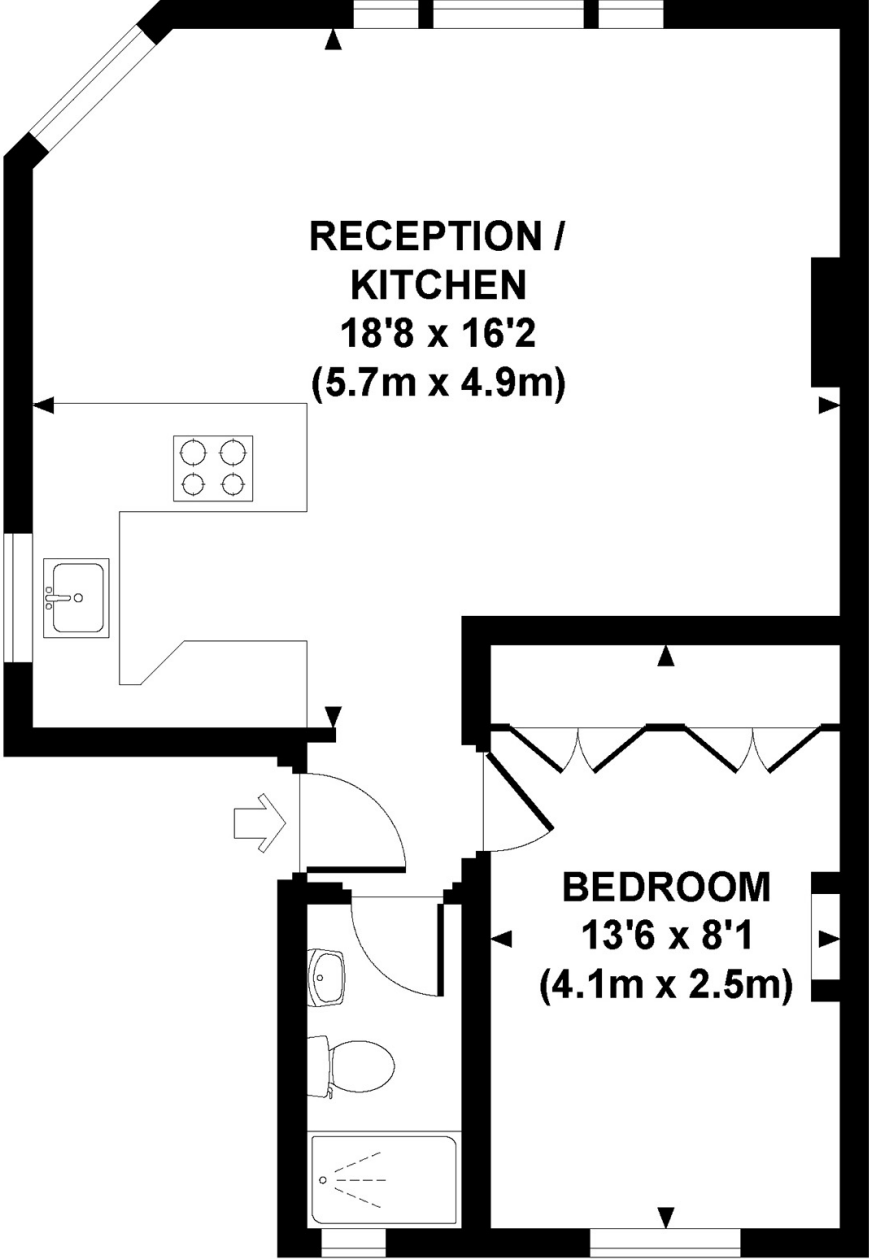
lettings.nhg@mountgrangeheritage.co.uk

Other offices Kensington - North Kensington

mountgrangeheritage.co.uk

ST. LUKES MEWS, W11

Approx. gross internal area
439 Sq Ft. / 40.8 Sq M.



FIRST FLOOR

All measurements are approximate and for illustration purposes only as defined by the RICS Code of Measuring Practice © 2013 Dowling Jones Design www.dowlingjones.com 020 7610 9933

Energy Performance Certificate



St. Lukes Mews, LONDON, W11 1DF

Dwelling type: Mid-floor flat
Date of assessment: 25 September 2013
Date of certificate: 30 September 2013

Reference number: 8947-7321-1040-0465-4926
Type of assessment: RdSAP, existing dwelling
Total floor area: 42 m²

Use this document to:

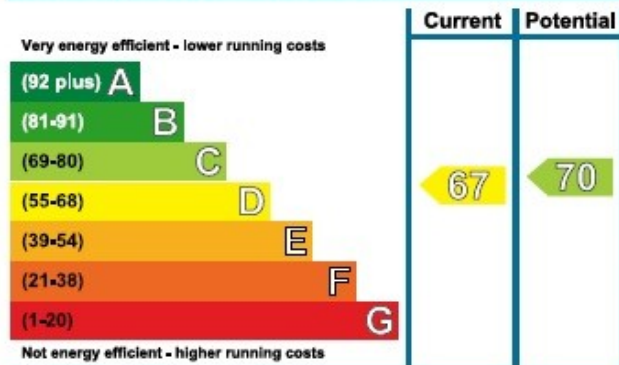
- Compare current ratings of properties to see which properties are more energy efficient
- Find out how you can save energy and money by installing improvement measures

Estimated energy costs of dwelling for 3 years:	£ 1,494
Over 3 years you could save	£ 165

Estimated energy costs of this home			
	Current costs	Potential costs	Potential future savings
Lighting	£ 93 over 3 years	£ 93 over 3 years	
Heating	£ 1,197 over 3 years	£ 1,032 over 3 years	
Hot Water	£ 204 over 3 years	£ 204 over 3 years	
Totals	£ 1,494	£ 1,329	

These figures show how much the average household would spend in this property for heating, lighting and hot water. This excludes energy use for running appliances like TVs, computers and cookers, and any electricity generated by microgeneration.

Energy Efficiency Rating



The graph shows the current energy efficiency of your home.

The higher the rating the lower your fuel bills are likely to be.

The potential rating shows the effect of undertaking the recommendations on page 3.

The average energy efficiency rating for a dwelling in England and Wales is band D (rating 60).

Top actions you can take to save money and make your home more efficient

Recommended measures	Indicative cost	Typical savings over 3 years	Available with Green Deal
1 Internal or external wall insulation	£4,000 - £14,000	£ 165	

To find out more about the recommended measures and other actions you could take today to save money, visit www.direct.gov.uk/savingenergy or call 0300 123 1234 (standard national rate). The Green Deal may allow you to make your home warmer and cheaper to run at no up-front cost.

IMPORTANT NOTICE

Mountgrange Heritage and their clients give notice that: 1) They are not authorised to make or give any representations or warranties in relation to the property either here or elsewhere, either on their own behalf or on behalf of their client or otherwise. They assume no responsibility for any statement that may be made in these particulars. These particulars do not form part of any offer or contract and must not be relied upon as statements or representations of fact. 2) Any areas, measurements or distances are approximate. The text, photographs and plans are for guidance only and are not necessarily comprehensive. It should not be assumed that the property has all necessary planning, building regulation or other consents and Mountgrange Heritage have not tested any services, equipment or facilities. Purchasers must satisfy themselves by inspection or otherwise.