

Bark Place, W2

£1,200 per week Fees May Apply

Well presented four bedroom house situated on a desirable tree-lined street in Bayswater. The property has been recently redecorated resulting in a contemporary and stylish home. Boasting a private garden this period house is located a few minutes walk from Notting Hill Gate, Queensway and Bayswater underground stations and the open spaces of Hyde Park. Westbourne Grove is also a five minute walk away.

4 Bedrooms | 1 Reception Room | 2 Bathrooms
Unfurnished

Notting Hill Office

27 Kensington Park Road, London W11 2EU

020 7221 2277

lettings.nhg@mountgrangeheritage.co.uk

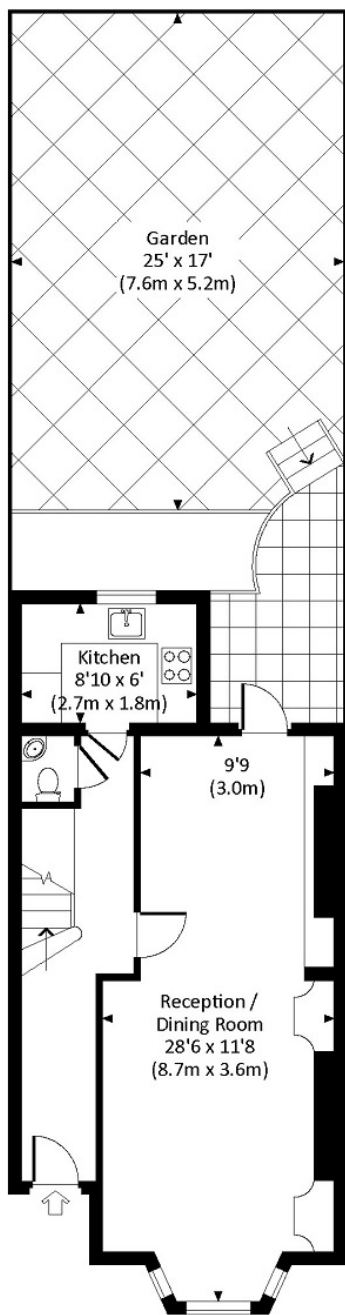
Other offices Kensington - North Kensington

mountgrangeheritage.co.uk

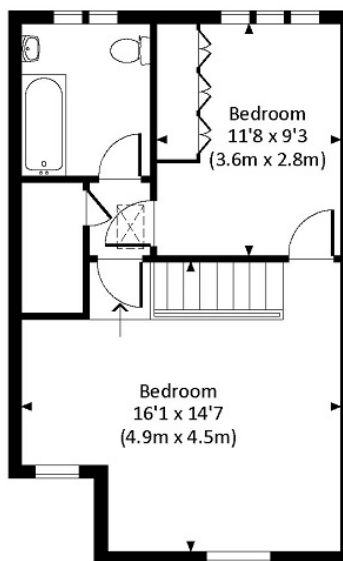
BARK PLACE, W2

Approx. gross internal area 1322 Sq Ft. / 122.8 Sq M.

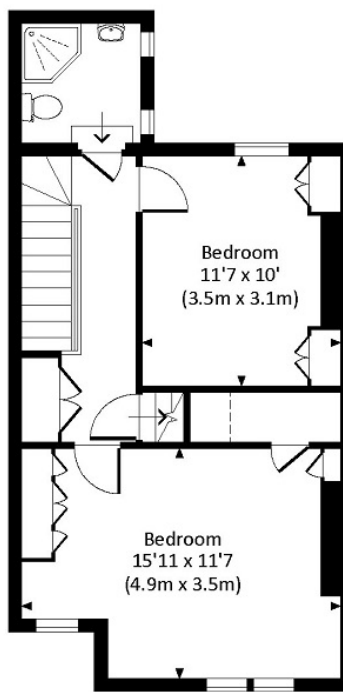
Approx. gross internal area 1327 Sq Ft. / 123.3 Sq M. Inc. Restricted Height



RAISED GROUND FLOOR



SECOND FLOOR



FIRST FLOOR



All measurements are approximate and for illustration purposes only as defined by the RICS Code of Measuring Practice © 2014
Dowling Jones Design www.dowlingjones.com 020 7610 9933

IMPORTANT NOTICE

Mountgrange Heritage and their clients give notice that: 1) They are not authorised to make or give any representations or warranties in relation to the property either here or elsewhere, either on their own behalf or on behalf of their client or otherwise. They assume no responsibility for any statement that may be made in these particulars. These particulars do not form part of any offer or contract and must not be relied upon as statements or representations of fact. 2) Any areas, measurements or distances are approximate. The text, photographs and plans are for guidance only and are not necessarily comprehensive. It should not be assumed that the property has all necessary planning, building regulation or other consents and Mountgrange Heritage have not tested any services, equipment or facilities. Purchasers must satisfy themselves by inspection or otherwise.